

# IMG 1010 ROM Field Upgrade

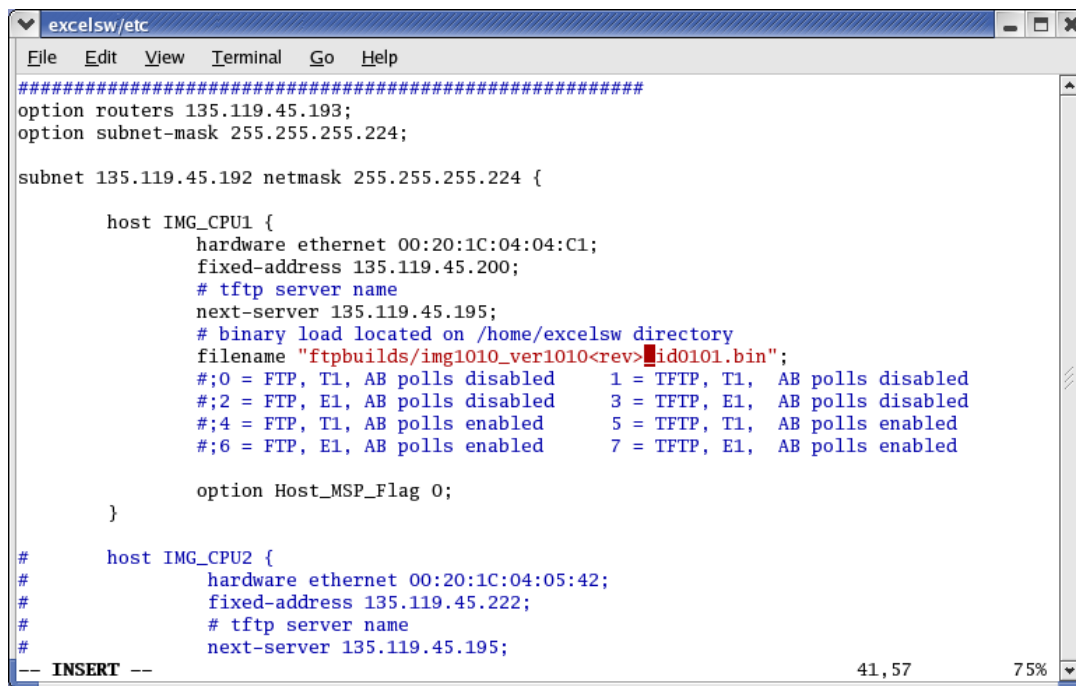
## Overview

This procedure instructs the user on how to field upgrade ROMs on an IMG 1010 via Telnet using the Linux operating system. It also describes how to verify the ROM upgrade using Telnet and the IMG 1010 front panel LCD screen.

## ROM Upgrade Procedure

To install the field upgradeable ROMs, proceed as follows:

1. Install the ROM load file HDP1010\_ID0101 in the folder specified by the filename line in dhcp.config file (see example below).
2. Open the dhcp.config file and change the displayed ROM load file name to reflect the upgraded ROM version. For example, change the file name IMG1010\_ver1010<rev>\_id0101.bin. Note that <rev> is the current build.



```
excelsw/etc
File Edit View Terminal Go Help
#####
option routers 135.119.45.193;
option subnet-mask 255.255.255.224;

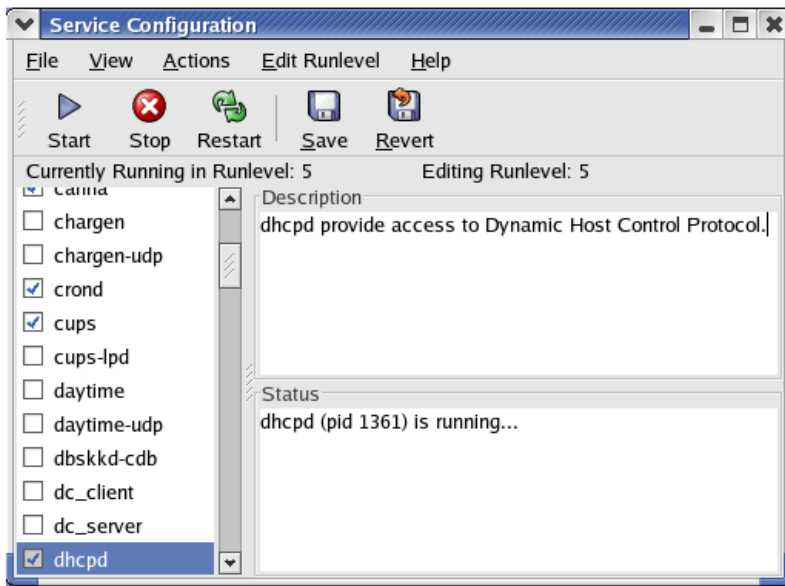
subnet 135.119.45.192 netmask 255.255.255.224 {

    host IMG_CPU1 {
        hardware ethernet 00:20:1C:04:04:C1;
        fixed-address 135.119.45.200;
        # tftp server name
        next-server 135.119.45.195;
        # binary load located on /home/excelsw directory
        filename "ftpbuilds/img1010_ver1010<rev>_id0101.bin";
        #;0 = FTP, T1, AB polls disabled      1 = TFTP, T1, AB polls disabled
        #;2 = FTP, E1, AB polls disabled      3 = TFTP, E1, AB polls disabled
        #;4 = FTP, T1, AB polls enabled       5 = TFTP, T1, AB polls enabled
        #;6 = FTP, E1, AB polls enabled       7 = TFTP, E1, AB polls enabled

        option Host_MSP_Flag 0;
    }

#    host IMG_CPU2 {
#        hardware ethernet 00:20:1C:04:05:42;
#        fixed-address 135.119.45.222;
#        # tftp server name
#        next-server 135.119.45.195;
#
-- INSERT --
41, 57 75%
```

3. To initiate the upgraded ROM filename change to the dhcp.config file, restart the DHCP service. using either of the two following options:
  - Use the **Main Menu > System Settings > Service Settings > Services** menu to restart the DHCP service or
  - From the command prompt, type in **service dhcp restart**.



4. To initiate the upgraded ROM load installation on the IMG 1010, it can be restarted either at the IMG 1010 (starting at step 5) or by telnet at the host (starting at step 13).

#### At 1010

5. Initiate a power cycle or a hard reset. To do a hard reset, press the up and down arrow buttons simultaneously for approximately 2.5 seconds. The DHCP/FTP service will be restarted, allowing the IMG 1010 to receive the new ROM upgrade from the Linux host.
6. Front panel screen displays: **Program the ROMs (y/n)**.
7. Use arrow buttons to select (y), then press **SELECT** button. Wait for approximately 30 seconds.
8. Front panel screen displays: **Enable the new ROMs (y/n)**.
9. Before selecting (y) at the prompt to enable the new ROM, do step 10.
10. At the Host, change the HDP1010\_ID0101 file name back to img1010\_ver1010<rev>\_id0101, then press **Ok**. From the command prompt, type in **service dhcp restart**.
11. At the 1010, use the arrow buttons to select (y), then press **SELECT** button.
12. To ensure that the new ROM upgrade has been installed, at the 1010 front panel display, access the System Info menu >Firmware Revision Level > FW Rev: (new ROM upgrade version).

#### At Host

13. Telnet to the CTRL 0 port at rear of the 1010 and enter user name and password. When the telnet main menu appears, type in **Q > Enter**, then **reset 9 > Enter**. The DHCP/FTP service will be restarted, allowing the IMG 1010 to receive the new ROM upgrade from the Linux host.
14. Re-establish the telnet connection by using the IP address of the CTRL 0 port at rear of 1010.
15. Host screen displays: **Do you want to program CPU Flash (y/n)**.
16. Press (y) on keyboard.
17. Wait for approximately 30 seconds and then bring up new Telnet window.
18. Host screen displays: **Enable the new ROMs (y/n)**.
19. Before selecting (y) at the prompt to enable the new ROM, do step 21.
20. At Host, change the HDP1010\_ID0101 file name back to img1010\_ver1010<rev>\_id0101, then press **Ok**.
21. Press (y) on keyboard.
22. To ensure that the new ROM upgrade has been installed, at the 1010 front panel display, access the System Info menu >Firmware Revision Level > FW Rev: (new ROM upgrade version).