



Dialogic® IMG 1010 Integrated Media Gateway

ROM Code Upgrade

Copyright and Legal Notice

Copyright © 2005-2008 Dialogic Corporation. All Rights Reserved. You may not reproduce this document in whole or in part without permission in writing from Dialogic Corporation at the address provided below.

All contents of this document are furnished for informational use only and are subject to change without notice and do not represent a commitment on the part of Dialogic Corporation or its subsidiaries ("Dialogic"). Reasonable effort is made to ensure the accuracy of the information contained in the document. However, Dialogic does not warrant the accuracy of this information and cannot accept responsibility for errors, inaccuracies or omissions that may be contained in this document.

INFORMATION IN THIS DOCUMENT IS PROVIDED IN CONNECTION WITH DIALOGIC® PRODUCTS. NO LICENSE, EXPRESS OR IMPLIED, BY ESTOPPEL OR OTHERWISE, TO ANY INTELLECTUAL PROPERTY RIGHTS IS GRANTED BY THIS DOCUMENT. EXCEPT AS PROVIDED IN A SIGNED AGREEMENT BETWEEN YOU AND DIALOGIC, DIALOGIC ASSUMES NO LIABILITY WHATSOEVER, AND DIALOGIC DISCLAIMS ANY EXPRESS OR IMPLIED WARRANTY, RELATING TO SALE AND/OR USE OF DIALOGIC PRODUCTS INCLUDING LIABILITY OR WARRANTIES RELATING TO FITNESS FOR A PARTICULAR PURPOSE, MERCHANTABILITY, OR INFRINGEMENT OF ANY INTELLECTUAL PROPERTY RIGHT OF A THIRD PARTY.

Dialogic products are not intended for use in medical, life saving, life sustaining, critical control or safety systems, or in nuclear facility applications.

Due to differing national regulations and approval requirements, certain Dialogic products may be suitable for use only in specific countries, and thus may not function properly in other countries. You are responsible for ensuring that your use of such products occurs only in the countries where such use is suitable. For information on specific products, contact Dialogic Corporation at the address indicated below or on the web at www.dialogic.com.

It is possible that the use or implementation of any one of the concepts, applications, or ideas described in this document, in marketing collateral produced by or on web pages maintained by Dialogic may infringe one or more patents or other intellectual property rights owned by third parties. Dialogic does not provide any intellectual property licenses with the sale of Dialogic products other than a license to use such product in accordance with intellectual property owned or validly licensed by Dialogic and no such licenses are provided except pursuant to a signed agreement with Dialogic. More detailed information about such intellectual property is available from Dialogic's legal department at 9800 Cavendish Blvd., 5th Floor, Montreal, Quebec, Canada H4M 2V9. **Dialogic encourages all users of its products to procure all necessary intellectual property licenses required to implement any concepts or applications and does not condone or encourage any intellectual property infringement and disclaims any responsibility related thereto. These intellectual property licenses may differ from country to country and it is the responsibility of those who develop the concepts or applications to be aware of and comply with different national license requirements.**

Dialogic® IMG 1010 Integrated Media Gateway ROM Code Upgrade

Dialogic, Dialogic Pro, Brooktrout, Cantata, SnowShore, Eicon, Eicon Networks, Eiconcard, Diva, SIPcontrol, Diva ISDN, TruFax, Realblocs, Realcomm 100, NetAccess, Instant ISDN, TRXStream, Exnet, Exnet Connect, EXS, ExchangePlus VSE, Switchkit, N20, Powering The Service-Ready Network, Vantage, Making Innovation Thrive, Connecting People to Information, Connecting to Growth and Shiva, among others as well as related logos, are either registered trademarks or trademarks of Dialogic. Dialogic's trademarks may be used publicly only with permission from Dialogic. Such permission may only be granted by Dialogic's legal department at 9800 Cavendish Blvd., 5th Floor, Montreal, Quebec, Canada H4M 2V9. Any authorized use of Dialogic's trademarks will be subject to full respect of the trademark guidelines published by Dialogic from time to time and any use of Dialogic's trademarks requires proper acknowledgement.

Warranty for Hardware Products: Dialogic Corporation or its subsidiary that originally sold the hardware product ("Dialogic") warrants to the original purchaser of this hardware product, that at the time of delivery the hardware product supplied hereunder will be free from defects in material and workmanship. This warranty is for the standard period set out on Dialogic's website at <http://www.dialogic.com/warranties> and is subject to all of the terms and limitations set out on the Dialogic website at <http://www.dialogic.com/warranties>.

Additional Exclusions: Dialogic will have no obligation to make repairs or replacements necessitated by your fault or negligence, improper or unauthorized use of the product, repairs or modifications made without Dialogic's prior written approval or by causes beyond the control of Dialogic, including, but not limited to, power or air conditioning failure, acts of God, improper interface with other units, or malfunction of any equipment or software used with the Dialogic product(s). If Dialogic is requested and agrees to make repairs or replacements necessitated by any such causes, you will pay for such service or replacement at Dialogic's then prevailing rates.

No Other Warranties: DIALOGIC DISCLAIMS AND YOU WAIVE ALL OTHER WARRANTIES, EITHER EXPRESS OR IMPLIED, INCLUDING BUT NOT LIMITED TO IMPLIED WARRANTIES OF MERCHANTABILITY, NON-INFRINGEMENT AND FITNESS FOR A PARTICULAR PURPOSE AND ANY WARRANTY AGAINST LATENT DEFECTS, WITH RESPECT TO ANY DIALOGIC PRODUCT.

No Liability for Damages: IN NO EVENT SHALL DIALOGIC OR ITS SUPPLIERS BE LIABLE FOR ANY DAMAGES WHATSOEVER (INCLUDING, WITHOUT LIMITATION, DAMAGES FOR LOSS OF PROFITS, INTERRUPTION OF ACTIVITIES, LOSS OF INFORMATION OR OTHER PECUNIARY LOSS AND DIRECT OR INDIRECT, CONSEQUENTIAL, INCIDENTAL, ECONOMIC OR PUNITIVE DAMAGES) ARISING OUT OF THE USE OF OR INABILITY TO USE ANY DIALOGIC PRODUCT.

Limitation of Liability: DIALOGIC'S MAXIMUM CUMULATIVE LIABILITY SHALL BE LIMITED TO THE AMOUNTS ACTUALLY PAID BY YOU TO DIALOGIC FOR THE SPECIFIC PRODUCT BEING THE OBJECT OF THE CLAIM. YOU RELEASE DIALOGIC FROM ALL AMOUNTS IN EXCESS OF THE LIMITATION. YOU ACKNOWLEDGE THAT THIS CONDITION IS ESSENTIAL AND THAT DIALOGIC WOULD NOT SUPPLY TO YOU IF IT WERE NOT INCLUDED.

Technical Support

Technical Support Number: 781-433-9600

Technical Support Fax: 781-449-9520

www.dialogic.com/support

IMPORTANT NOTE:

Please be aware that the following terminology and abbreviations are used throughout this document. Please also be sure to consult the legal notice for other important details.

- When used herein, the term “IMG 1010” refers to the “Dialogic® IMG 1010 Integrated Media Gateway” product.
- When used herein, the term “GCEMS” refers to the “Dialogic® Gate Control Element Management System”
- When used herein, the term “VoIP Module” refers to the “Dialogic® 1010 VoIP Module”
- When used herein, the term “Media Module” refers to the “Dialogic® 1010 Media Module”

IMG 1010 ROM Field Upgrade

Important:

The new ROMs can be located via <http://www.dialogic.com/support> . Go to the support site and once logged in you can then access the BBS Software download site. To download files from the BBS Software download site you will need a username and password. If you do not have a username and password to this site, please contact the Dialogic Technical Support team via the phone numbers above or click on "**Request a Login**" link on the main BBS Software page and follow the prompts.

Overview:

The procedure below instructs the user on how to field upgrade ROMs on an IMG 1010 via Telnet using the GCEMS. Once the ROMS have been loaded, the procedure then describes how to verify the ROM upgrade by using a Telnet Application or the IMG 1010 front panel LCD screen.

ROM Upgrade Procedure:

The ROM Code file **HDP1010_ID0101.bin** downloaded from the support site must be installed into the directory that the FTP server goes to download the file to the IMG 1010. Follow the procedures below to accomplish this.

- Below is screen capture of a portion of the dhcpd.conf file located in the /etc directory on the GCEMS server. See the screen capture below which indicates the directory to load the ROM code file in. In the example below the ROM Code file must be loaded into the /home/excelsw/ftpBuilds directory.

```

excelsw/etc
File Edit View Terminal Go Help
#####
option routers 135.119.45.193;
option subnet-mask 255.255.255.224;

subnet 135.119.45.192 netmask 255.255.255.224 {

    host IMG_CPU1 {
        hardware ethernet 00:20:1C:04:04:C1;
        fixed-address 135.119.45.200;
        # tftp server name
        next-server 135.119.45.195;
        # binary load located on /home/excelsw directory
        filename "ftpbuilds/img1010_ver1010<rev>id0101.bin";
        #;0 = FTP, T1, AB polls disabled      1 = TFTP, T1, AB polls disabled
        #;2 = FTP, E1, AB polls disabled      3 = TFTP, E1, AB polls disabled
        #;4 = FTP, T1, AB polls enabled       5 = TFTP, T1, AB polls enabled
        #;6 = FTP, E1, AB polls enabled       7 = TFTP, E1, AB polls enabled

        option Host_MSP_Flag 0;
    }

    #
    host IMG_CPU2 {
        hardware ethernet 00:20:1C:04:05:42;
        fixed-address 135.119.45.222;
        # tftp server name
        next-server 135.119.45.195;
    }
}
-- INSERT --
41,57 75%
```

- Using an FTP application load the file **HDP1010_ID0101** into the /home/excelsw/ftpBuilds directory. Copy it over as a binary file.

Dialogic® IMG 1010 Integrated Media Gateway ROM Code Upgrade

3. Once the file is loaded into the ftpBuilds folder you will need to transfer it from the ftpBuilds folder into the IMG. This is done through an FTP transfer. Follow the next few steps to configure the GCEMS server to transfer the file to the IMG.
4. In the GCEMS server go to /etc directory.
5. Within the /etc directory is a file named dhcpd.conf open this file with an editor or VI utility.
6. Within the dhcpd.conf file there is a line which states:

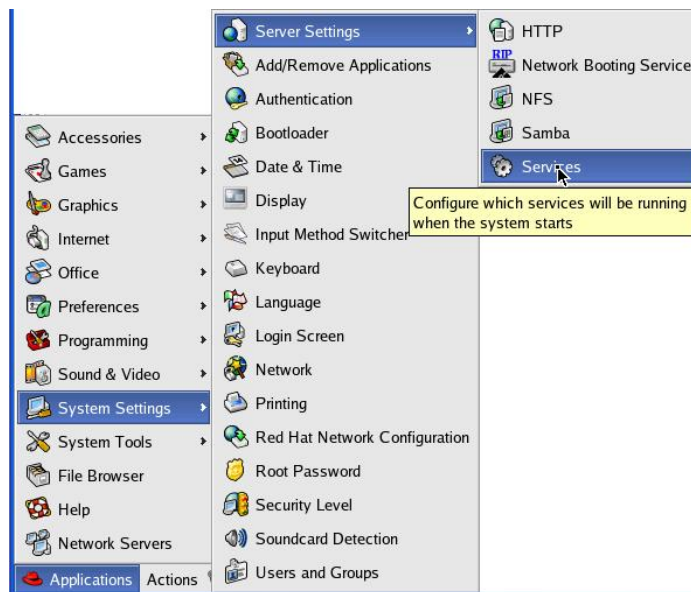
filename "ftpBuilds/img1010_id0101.bin"

Edit this line so that it reads "ftpBuilds/HDP1010_0101.bin"

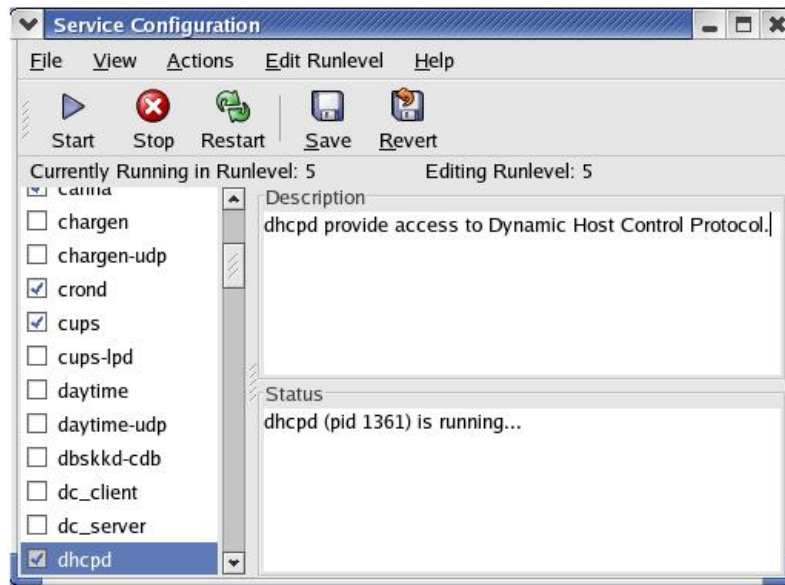
7. Restart the DHCP service. using either of the two following options:

Option 1:

- A. As a root user, in the GCEMS server, open the Service Configuration window as shown below.



- B. This will open up a Service Configuration window. Scroll down to the dhcpd heading. Select it and select Restart. See Below



Option 2:

- A. Open a terminal window.
- B. Become a superuser.
- C. As superuser enter the following command:

`/sbin/service dhcpd restart`

- 8. To initiate the upgraded ROM load installation on the IMG 1010, the IMG will need to be restarted. Telnet to the CTRL 0 port at rear of the 1010 and enter user name and password.
- 9. When the telnet main menu appears, type in Q and the <Enter Key>
- 10. Enter in the reset 9 command and then the <Enter Key>.
- 11. The DHCP/FTP service will be restarted, allowing the IMG 1010 to receive the new ROM upgrade from the Linux host.
- 12. Re-establish the telnet connection by using the IP address of the CTRL 0 port at rear of 1010. The Host screen will display the following:

Do you want to program CPU Flash (y/n).?

Press (y) on keyboard.

- 13. Wait for approximately 30 seconds and then bring up new Telnet window.
- 14. The LCD on IMG front panel will then display:

Enable the new ROMs (y/n).

Before selecting (y) at the prompt to enable the new ROM, do step 15

Dialogic® IMG 1010 Integrated Media Gateway ROM Code Upgrade

15. Go to the dhcpd.conf file and change the **HDP1010_ID0101** file name back to its original value of:

```
img1010_ver1010<rev>_id0101
```

16. Now select (y) to the Program the ROMs question in Step 14.
17. To verify that the new ROM upgrade has been installed, telnet into the IMG.

Username: excel
Password: excel2004

18. Once logged in, hit the "1" key which will **Show System Info**. Verify the Firmware Revision level displays the version of ROM code just loaded.