



Dialogic® HMP Software and Dialogic® Diva® SDK

Installation and Configuration Guide

First Edition (October 2007)

64-0298-01

Copyright Notice and Legal Disclaimer

Copyright © 1998- 2007 Dialogic Corporation. All Rights Reserved. You may not reproduce this document in whole or in part without permission in writing from Dialogic Corporation.

All contents of this document are furnished for informational use only and are subject to change without notice and do not represent a commitment on the part of Dialogic Corporation or its subsidiaries ("Dialogic"). Reasonable effort is made to ensure the accuracy of the information contained in the document. However, Dialogic does not warrant the accuracy of this information and cannot accept responsibility for errors, inaccuracies or omissions that may be contained in this document.

INFORMATION IN THIS DOCUMENT IS PROVIDED IN CONNECTION WITH DIALOGIC® PRODUCTS. NO LICENSE, EXPRESS OR IMPLIED, BY ESTOPPEL OR OTHERWISE, TO ANY INTELLECTUAL PROPERTY RIGHTS IS GRANTED BY THIS DOCUMENT. EXCEPT AS PROVIDED IN A SIGNED AGREEMENT BETWEEN YOU AND DIALOGIC, DIALOGIC ASSUMES NO LIABILITY WHATSOEVER, AND DIALOGIC DISCLAIMS ANY EXPRESS OR IMPLIED WARRANTY, RELATING TO SALE AND/OR USE OF DIALOGIC PRODUCTS INCLUDING LIABILITY OR WARRANTIES RELATING TO FITNESS FOR A PARTICULAR PURPOSE, MERCHANTABILITY, OR INFRINGEMENT OF ANY INTELLECTUAL PROPERTY RIGHT OF A THIRD PARTY.

Dialogic products are not intended for use in medical, life saving, life sustaining, critical control or safety systems, or in nuclear facility applications.

It is possible that the use or implementation of any one of the concepts, applications, or ideas described in this document, in marketing collateral produced by or on web pages maintained by Dialogic Corporation or its subsidiaries may infringe one or more patents or other intellectual property rights owned by third parties. Dialogic does not provide any intellectual property licenses with the sale of Dialogic products other than a license to use such product in accordance with intellectual property owned or validly licensed by Dialogic and no such licenses are provided except pursuant to a signed agreement with Dialogic Corporation. More detailed information about such intellectual property is available from Dialogic's legal department at 9800 Cavendish Blvd., Montreal, Quebec, Canada H4M 2V9. **Dialogic Corporation encourages all users of its products to procure all necessary intellectual property licenses required to implement any concepts or applications and does not condone or encourage any intellectual property infringement and disclaims any responsibility related thereto. These intellectual property licenses may differ from country to country and it is the responsibility of those who develop the concepts or applications to be aware of and comply with different national license requirements.**

Dialogic and Diva are registered trademarks or trademarks of Dialogic Corporation. Dialogic's trademarks may be used publicly only with permission from Dialogic. Such permission may only be granted by Dialogic's legal department at 9800 Cavendish Blvd., 5th Floor, Montreal, Quebec, Canada H4M 2V9. Any authorized use of Dialogic's trademarks will be subject to full respect of the trademark guidelines published by Dialogic from time to time and any use of Dialogic's trademarks requires proper acknowledgement.

The names of actual companies and products mentioned herein are the trademarks of their respective owners.

To contact Dialogic Customer Support, visit our Web site at www.dialogic.com/support.

This software is based in part on the work of the Independent JPG Group.

Tiff Lib

Copyright © 1988-1997 Sam Leffler

Copyright © 1991-1997 Silicon Graphics, Inc.

Permission to use, copy, modify, distribute, and sell this software and its documentation for any purpose is hereby granted without fee, provided that (i) the above copyright notices and this permission notice appear in all copies of the software and related documentation, and (ii) the names of Sam Leffler and Silicon Graphics may not be used in any advertising or publicity relating to the software without the specific, prior written permission of Sam Leffler and Silicon Graphics.

Dialogic Corporation License Agreement for Use of Software

This is an Agreement between you, the Company, and your Affiliates (referred to in some instances as "You" and in other instances as "Company" and all your Authorized Users and Dialogic Corporation ("Dialogic").

YOU SHOULD CAREFULLY READ THE FOLLOWING TERMS AND CONDITIONS BEFORE INSTALLING OR DOWNLOADING THE SOFTWARE. IF YOU AGREE WITH THESE TERMS YOU MAY PROCEED WITH THE DOWNLOAD OR INSTALLATION OF THE SOFTWARE. IF YOU DO NOT AGREE WITH THESE TERMS, PLEASE RETURN THE PACKAGE IN "AS NEW" CONDITION (INCLUDING DOCUMENTATION AND BINDERS OR OTHER CONTAINERS) AND YOUR MONEY WILL BE REFUNDED. DOWNLOADING OR INSTALLING THE SOFTWARE CONSTITUTES YOUR ACCEPTANCE OF THESE TERMS AND CONDITIONS. YOU ASSUME RESPONSIBILITY FOR THE SELECTION OF THE PROGRAM TO ACHIEVE YOUR INTENDED RESULTS, AND FOR THE INSTALLATION, USE, AND RESULTS OBTAINED FROM THE PACKAGE.

Copyright

The enclosed Software ("Program") and documents are owned by Dialogic Corporation ("Dialogic") and its suppliers and are protected by copyright laws and international treaty provisions. Therefore, You and your Authorized Users must treat the Program and documentation like any other copyrighted material except as expressly permitted in this License Agreement.

License

Under the terms and conditions of this License Agreement:

- You may install and use one copy of the Program on a single-user computer, file server, or on a workstation of a local area network, and only in conjunction with a legally acquired Dialogic hardware or software product;
- The primary Authorized User on the computer on which the "Program" is installed may make a second copy for his/her exclusive use on either a home or portable computer;
- You may copy the Program into any machine readable or printed form for backup or modification purposes in support of your use of one copy of the Program;
- You may make one copy of Dialogic's documentation provided that all copyright notices contained within the documentation are retained;
- You may modify the Program and/or merge it into another Program for your use in one computer; (any portion of this Program will continue to be subject to the terms and conditions of this Agreement);
- You may transfer the Program, documentation and the license to another eligible party within your Company if the other party agrees to accept the terms and conditions of this Agreement. If You transfer the Program and documentation, You must at the same time either transfer all copies whether in printed or machine readable form to the same party or destroy any copies not transferred; this includes all modifications and portions of the Program contained in or merged into other Programs;
- You must reproduce and include the copyright notice on any copy, modification or portion of the Program merged into another Program;
- You may not rent or lease the Program. You may not reverse engineer, decompile or disassemble the Program. You may not use, copy, modify or transfer the Program and documentation, or any copy, modification or merged portion, in whole or in part, except as expressly provided for in this License Agreement;
- If You transfer possession of any copy, modification or merged portion of the Program or documentation to another party in any way other than as expressly permitted in this License Agreement, this license is automatically terminated.

Upgrades

If the Program is provided as an upgrade and the upgrade is an upgrade from another software product licensed to You and Your Authorized Users by Dialogic, the upgrade is governed by the License Agreement earlier provided with that software product package and the present License Agreement does not grant you additional license(s).

Term

The license is effective until terminated. You may terminate it at any time by destroying the Program and documentation together with all copies, modifications and merged portions in any form. It will also terminate upon conditions set forth elsewhere in this Agreement or if you fail to comply with any terms or conditions of this Agreement. You agree upon such termination to destroy the Program and documentation together with all copies, modifications and merged portions in any form.

Limited Warranty

The only warranty Dialogic makes is that the medium on which the Program is recorded will be replaced without charge if Dialogic, in good faith, determines that it was defective in materials or workmanship and if returned to your supplier with a copy of your receipt within ninety (90) days from the date you received it. Dialogic offers no warranty for your reproduction of the Program. This Limited Warranty is void if failure of the Program has resulted from accident, misuse, abuse, or misapplication.

Customer Remedies

Dialogic's entire liability and You and Your Authorized Users exclusive remedy shall be, at Dialogic's option, either (a) return of the price paid or (b) repair or replacement of the Program that does not meet the above Limited Warranty. Any replacement Program will be warranted for the remainder of the original Warranty period.

No Other Warranties

Dialogic disclaims all other warranties, either expressed or implied, including but not limited to implied warranties or merchantability and fitness for a particular purpose and the warranty against latent defects, with respect to the Program and the accompanying documentation. This limited warranty gives You specific legal rights. You may have others, which may vary from jurisdiction to jurisdiction.

No Liability for Consequential Damage

In no event shall Dialogic or its suppliers be liable for any damages whatsoever (including without limitation, damages for loss of business profits, business interruption, loss of information, or other pecuniary loss and indirect, consequential, incidental, economic, or punitive damages) arising out of the use of or inability to use this Program, even if Dialogic has been advised of the possibility of such damages. As some jurisdictions do not allow the exclusion or limitation for certain damages, some of the above limitations may not apply to You or your Authorized Users.

Limit of Liability

Dialogic's entire aggregate liability under any provision of this agreement shall be limited to the amount actually paid by You for the affected Program.

Right to Audit

If this Program is licensed for use in a Company, your Company agrees to keep all usual and proper records and books of accounts and all usual proper entries relating to each reproduction and Authorized User of the Program during the term of this Agreement and for a period of three (3) years thereafter. During this period, Dialogic may cause an audit to be made of the applicable records in order to verify Your compliance with this Agreement and prompt adjustment shall be made to compensate for any errors or omissions disclosed by such audit. Any such audit shall be conducted by an independent certified public accountant selected by Dialogic and shall be conducted during the regular business hours at Your offices and in such a manner as not to interfere with Your normal business activities. Any such audit shall be paid for by Dialogic unless material discrepancies are disclosed. For such purposes, "material discrepancies" shall mean three percent (3%) or more of the Authorized Users within the Company. If material discrepancies are disclosed, Your Company agrees to pay Dialogic for the costs associated with the audit as well as the license fees for the additional Authorized Users. In no event shall audits be made more frequently than semi-annually unless the immediately preceding audit disclosed a material discrepancy.

Supplementary Software

Any Supplementary Software provided with the Dialogic Program referred to in this License Agreement is provided "as is" with no warranty of any kind.

U.S. Government Restricted Rights

The Program and documentation are provided with RESTRICTED RIGHTS. Use, duplication or disclosure by the U.S. Government is subject to restrictions as set forth in subparagraph c) 1) ii) of The Rights in Technical Data and Computer Software clause at DFARS 252.227-7013 or subparagraph c) 1) and 2) of the Commercial Computer Software-Restricted Rights at 48 CFR52.227-19, as applicable.

Governing Law

This Agreement shall be construed and controlled by the laws in force in the Province of Quebec, Canada.

Contractor/ manufacturer is:

Dialogic CORPORATION.

9800 Cavendish Blvd., Montreal, Quebec, Canada H4M 2V9

This Agreement has been drafted in English at the express wish of the parties. Ce contrat a été rédigé en anglais à la demande expresse des parties.

Contents

Copyright Notice and Legal Disclaimer	2
Dialogic Corporation License Agreement for Use of Software.....	3
About this Reference Guide	6
How to use this guide	6
Structure of this guide	6
Installing the Dialogic® HMP Software	7
Activating the Dialogic® HMP Software License	10
Starting the Dialogic® HMP Software.....	13
Setting Auto Start Mode for Dialogic® HMP software	13
Installing and Configuring the Dialogic® Diva® SDK	14
Dialogic® Diva® SDK installation	14
Default configuration	14
Customized configuration	14
Samples for configuration files	16

CHAPTER 1

About this Reference Guide

How to use this guide

- To view a section, click the corresponding bookmark located on the left.
- To view a topic that contains further information, click the corresponding blue underlined phrase.
- You may wish to print out the pages required for developing your communication application.

Structure of this guide

This guide presents installation and configuration procedures for the Dialogic® Host Media Processing (HMP) software and the Dialogic® Diva® Software Development Kit (SDK). This guide is structured as follows:

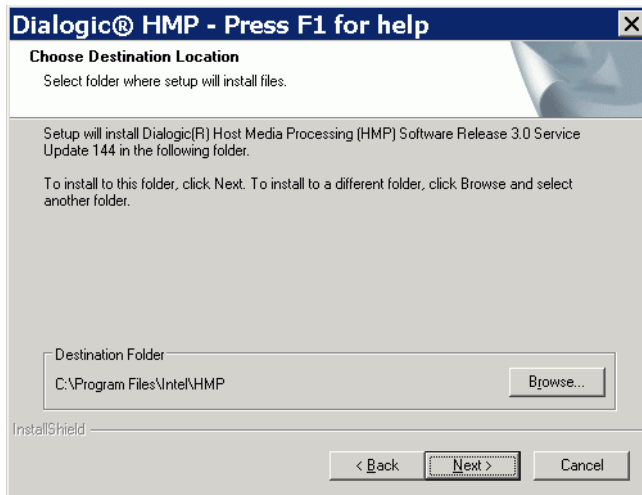
Section	Contents
Installing the Dialogic® HMP Software	Installation of the Dialogic HMP software using the setup wizard.
Activating the Dialogic® HMP Software License	Activation of the license in the Dialogic HMP software License Manager.
Starting the Dialogic® HMP Software	Manual or automatic start of the Dialogic HMP software service.
Installing and Configuring the Dialogic® Diva® SDK	Installation and configuration of the Diva SDK, including samples of configuration files.

CHAPTER 2

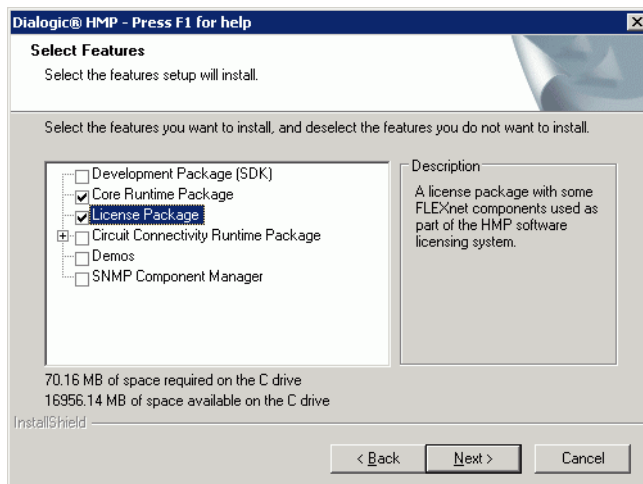
Installing the Dialogic® HMP Software

Before you can install the Dialogic HMP software, you need to download the latest system update available from the Dialogic web site at http://www.dialogic.com/products/ip_enabled/hmp_software.htm. To install the software, do the following:

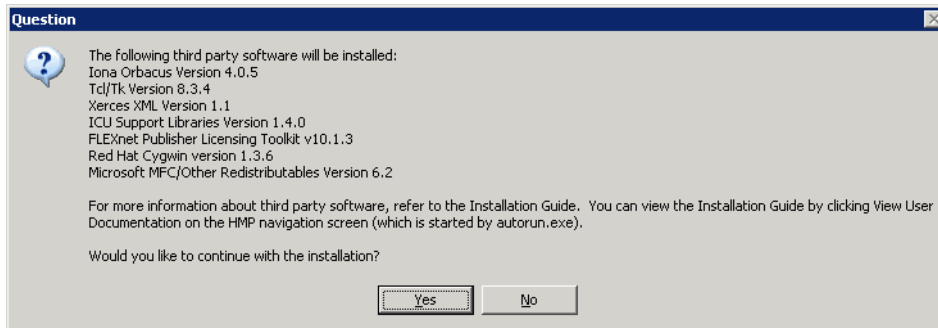
1. Extract the downloaded ZIP file to a directory on the local hard drive.
2. Go to the directory to which you extracted the files, and double-click "setup.exe" to start the installation procedure.
3. In the welcome dialog box, click **Next**.
4. In the **Choose Destination Location** box, you can confirm or change the installation directory.



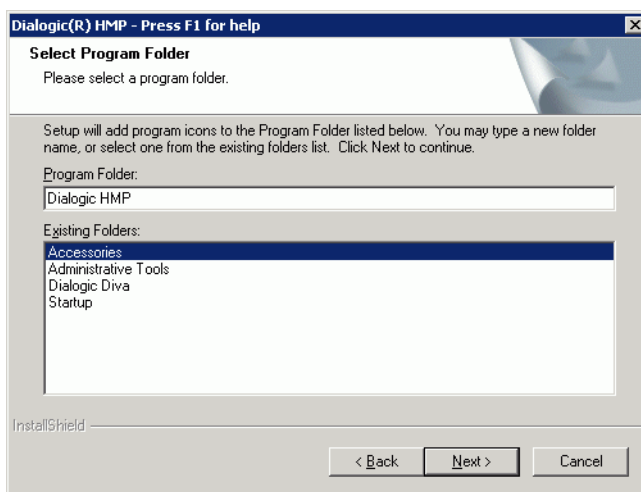
5. In the **Select Features** box, you need to select at least **Core Runtime Package** and **License Package**. Both features are mandatory for the Dialogic® Diva® Software Development Kit.



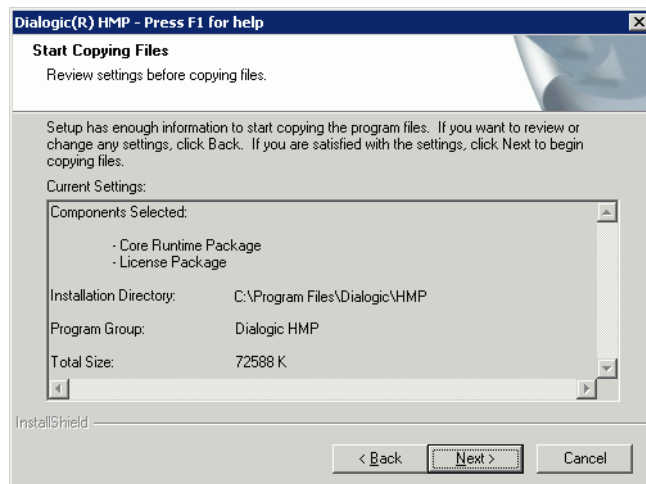
6. A dialog box will appear, asking you to confirm the information about 3rd party software installed with the Dialogic® HMP software.



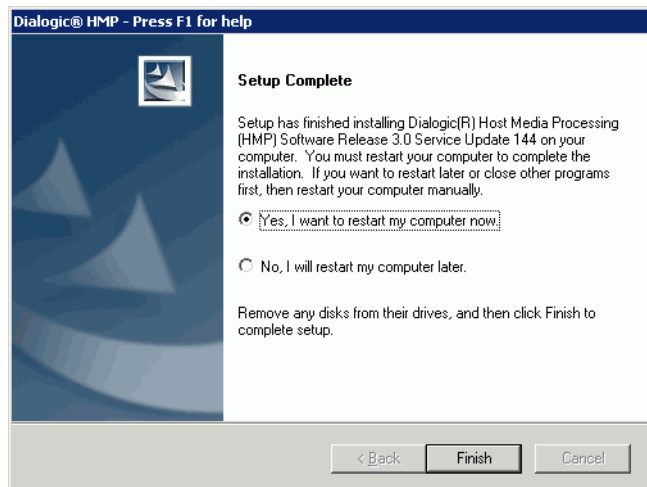
7. In the **Select Program Folder**, type "Dialogic HMP" in the **Program Folder** field, and click **Next**.



8. In the **Start Copying Files** box, click **Next** to start the installation process.



9. After the installation is finished, the **Setup Complete** box appears, where you are asked to restart your PC. Click **Finish** to do so. The restart is necessary to complete the installation of the drivers.



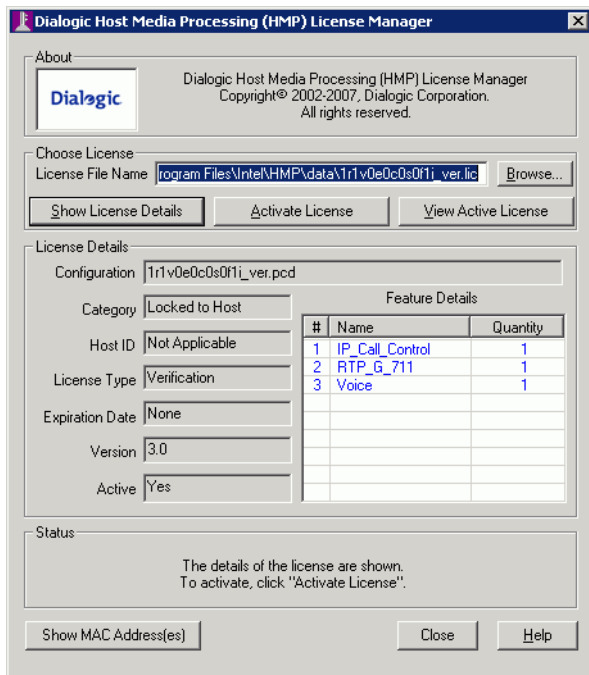
Before you can use the Dialogic® HMP software, you need to activate the license. See [Activating the Dialogic® HMP Software License](#) on page 10 for more information.

CHAPTER 3

Activating the Dialogic® HMP Software License

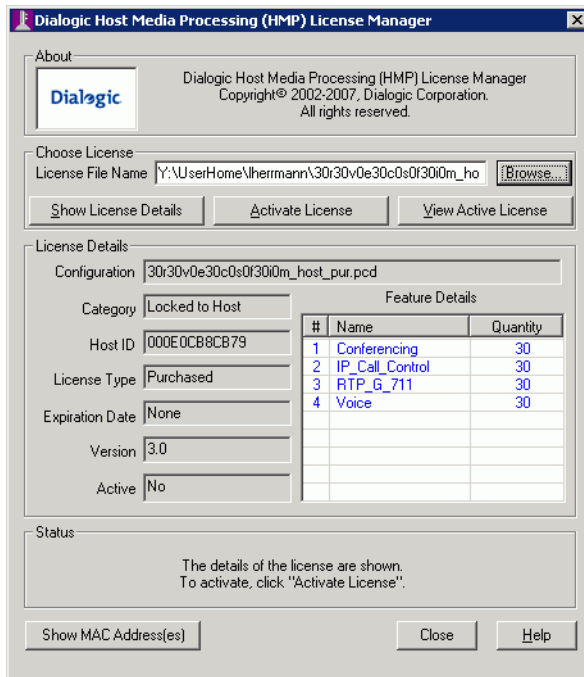
The Dialogic® HMP software is delivered with a demonstration license for one channel, which is activated by default. This license allows for making a voice call on one channel using H.323 or SIP. If you need more than one channel, you need to request a license from Dialogic. After receiving the license, you need to activate it as follows:

1. Copy the license file to your local hard drive.
2. Open the Dialogic® HMP Software License Manager via **Start > Programs > Dialogic HMP > HMP License Manager**.

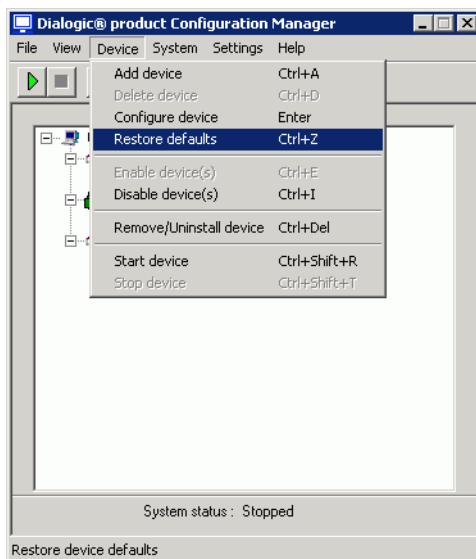


3. Under **Choose License**, the path to the default license file is displayed. Click **Browse** and go to the directory on your local hard drive in which you saved the license file, select the license file, and click **Open**.

4. Once the license is added, the license details are displayed under **Feature Details**.

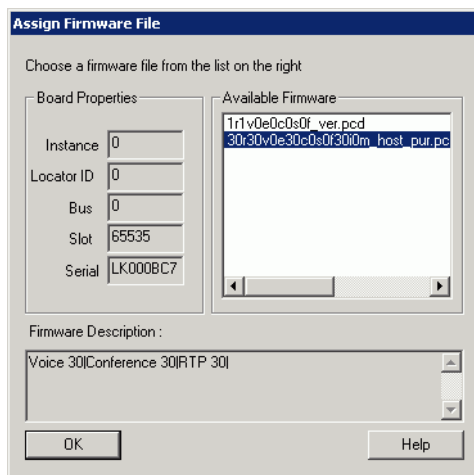


5. Click **Show MAC Address(es)** and ensure that the displayed MAC address matches the **Host ID** of the license.
6. Click **Activate License** and after the activation process is finished, close the License Manager.
7. Open the Dialogic® Configuration Manager (DCM) via **Start > Programs > Dialogic HMP > Configuration Manager - DCM**.
8. Select **HMP_Software #0 in slot <slot number>** and then click the **Device** menu and select **Restore defaults**.



9. Confirm the information in the displayed dialog box with **OK**.

10. The **Assign Firmware File** box is displayed. The new license is highlighted under **Available Firmware**.




Confirm the selection with **OK**.

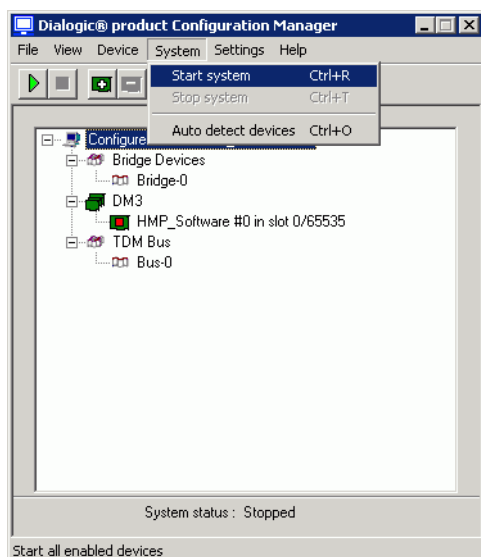
The license is now active and the Dialogic® HMP software can be started. See [Starting the Dialogic® HMP Software](#) on page 13 for more information.

CHAPTER 4

Starting the Dialogic® HMP Software

By default, the manual start mode is selected, which means that the Dialogic® HMP software service is not started when the host computer starts, and you need to start the Dialogic HMP software before using it:

1. Open the Dialogic® Configuration Manager (DCM) via **Start > Programs > Dialogic HMP > Configuration Manager - DCM**.
2. Click either the  button (Start all enabled devices) or the **System** menu and then **Start system** as shown in the following screen.

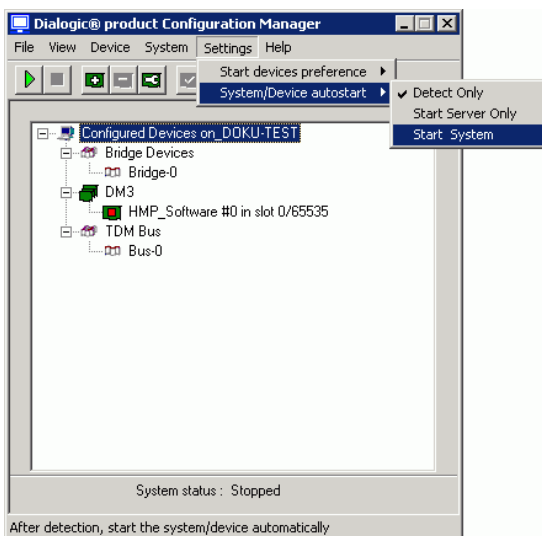


3. You can also configure the Dialogic HMP software to start automatically when booting the host computer. See the description below for more information.

Setting Auto Start Mode for Dialogic® HMP software

The Dialogic HMP software can be configured to start when booting the host computer. To accomplish this:

1. Open the Dialogic® Configuration Manager (DCM) via **Start > Programs > Dialogic HMP > Configuration Manager - DCM**.
2. Click the **Settings** menu and then **System/Device autostart > Start System**.



CHAPTER 5

Installing and Configuring the Dialogic® Diva® SDK

Dialogic® Diva® SDK installation

To install the Diva SDK:

1. Go to the Diva SDK directory tree.
2. Open the "basic\bin" folder and double-click the "Config.exe" file.
3. The **Configuration** dialog box appears and displays the version of the formerly installed SDK, if any, and the version of the new SDK. Click **Update** to install the latest SDK runtime.
4. After the files are installed, click **OK** to close the dialog box.

Default configuration

By default, the Diva SDK automatically detects all installed Dialogic® Diva® Media Boards and the Dialogic® HMP software. For all Diva Media Boards, the configuration is done in the Dialogic® Diva® Configuration Manager. For the Dialogic HMP software, the default configuration is the following:

- Use all licensed IP channels for SIP
- Use the default IP address
- Use standard SIP port 5060
- No Proxy is defined
- No registration at registrar server(s)

Customized configuration

The Dialogic® Diva® SDK allows for overwriting the existing defaults with a configuration file. The configuration file is XML-based, needs to be named "DSSDK.XML", and needs to reside in the same path as the "DSSDK.DLL", which is typically installed to "%WINDIR%\System32".

The Diva SDK supports multiple line devices, which are the E1/T1 trunks or the BRI interfaces of the Dialogic® Diva® Media Boards. For the Dialogic® HMP software, a line device can support either SIP or H.323, and multiple line devices can be configured, e.g., multiple devices using SIP but different proxy server.

The format of the XML files is shown in the [Samples for configuration files](#) on page 16. The tables from page 15 and after provide the information about the configuration options.

Note: The common parameters and the H.323 gatekeeper parameters can only be specified once. The SIP registrar parameters may be specified for multiple registrar servers.

Common parameter

Name	SIP/H.323	Description
NetworkInterface	SIP/H.323	Specifies the IP address to be used. If this field is empty, the default IP address is used.
Channels	SIP/H.323	Specifies the amount of channels for this line device. The channels for all configured line devices must not exceed the amount of licensed IP channels. By default, the licensed channels are used.
SignalingProtocol	SIP/H.323	The signaling protocol is either SIP or H323. By default, SIP is used.
SignalingPort	SIP/H.323	If the default port should not be used, specify the port. The default depends on the signaling protocol.
SignalingTransport Protocol	SIP/H.323	Either UDP or TCP, the default is UDP.
ProxyIPAddress	SIP	Optional parameter, specifies the IP address of a proxy server. If set, the host name is ignored.
ProxyPort	SIP	Optional parameter, specifies the port of a proxy server.
ProxyHostname	SIP	Optional parameter, specifies the host name of a proxy server. It is used only if the ProxyIPAddress is not set.
MaxRegistrations	SIP	Specifies the maximum amount of registrations at registrar servers.
GatewayIPAddress	H.323	Optional parameter of an H.323 gateway. If specified, all requests that do not contain the TA: <ip address> notation are sent to the gateway.
GatewayPort	H.323	Optional parameter, specifies the port number of the H.323 gateway.

SIP registrar

Name	Description
RegistrarAddress	IP address of the registrar server. IP address and port name or full name for optional port.
UserID	User part of SIP address used for "From:" and "To:" fields.
Domain	Domain part of the users public SIP address.
Password	Password for the authentication at the registrar server.
AuthorizationUser	If a different user name than the one specified for the UserId is required for authentication, it must be specified here.
AuthorizationRealm	Realm used by the registrar server when authentication is requested. If the registrar uses the domain name as realm, this parameter can be left empty.
DisplayName	Optional name used for the registrar request. This parameter can be left empty.
AutoRefreshInterval	Time for re-registration in seconds. The default is 3600 seconds.

H.323 gatekeeper

Name	Description
GatekeeperAddress	The address or name of the gatekeeper. This may be an IP address with or without the port number or a DNS name.
EndpointType	Endpoint type with possible values "Terminal" or "Gateway".
Aliases	The H.323 aliases for this endpoint, which need to be separated by a comma. The names may contain spaces.
Prefixes	Prefixes according to H.323. Only valid for the EndpointType "Gateway".

Name	Description
Number	Specifies a comma separated list of numbers that should be routed to this endpoint.
Name	The name specifies the H.323 ID.
AutoRefreshInterval	Specifies the time for re-registration in seconds. The default is no repetition.

For compatibility with existing applications, the Dialogic® Diva® SDK allows for mapping phone numbers to SIP or H.323 addresses. For each device, multiple MAP entries can be added, which have the following syntax:

```
<Map>
```

```
  <Number>123</Number>
```

```
  <Address>sip:joe.smith@cia.org</Address>
```

```
</Map>
```

Samples for configuration files

The following sample configuration files show a configuration for the following scenarios:

- One Line device using SIP and two registrar servers.
- One line device using H.323, a gateway and a gatekeeper.
- Two line devices, one for SIP and another for H.323. Other parameters as done before.

One line device using SIP

The sample shows the configuration for a 120 channel license of the Dialogic® HMP software, which uses all channels for SIP. The local IP address is 192.168.0.10 and the registrar server is available at the address 192.168.0.100. Two users are registered at the same registrar server.

```
<DivaAPIConfiguration>
  <Device>
    <NetworkInterface>192.168.0.100</NetworkInterface>
    <Channels>120</Channels>
    <SignalingProtocol>SIP</SignalingProtocol>
    <SignalingPort />
    <SignalingTransportProtocol>UDP</SignalingTransportProtocol>
    <ProxyIPAddress />
    <ProxyHostname />
    <ProxyPort />
    <MaxRegistrations>10</MaxRegistrations>
    <GatewayIPAddress />
    <GatewayPort />
    <Registrar>
      <RegistrarAddress>192.168.0.10:5061</RegistrarAddress>
      <Domain>192.168.0.10</Domain>
      <UserID>700</UserID>
      <Password>test</Password>
      <AuthorizationUser />
```



```
<AuthorizationRealm>user</AuthorizationRealm>
<DisplayName>700</DisplayName>
<AutoRefreshInterval>360</AutoRefreshInterval>
</Registrar>
<Registrar>
  <RegistrarAddress>192.168.0.10:5061</RegistrarAddress>
  <Domain>192.168.0.10</Domain>
  <UserID>600</UserID>
  <Password>test</Password>
  <AuthorizationUser />
  <AuthorizationRealm>user</AuthorizationRealm>
  <DisplayName>600</DisplayName>
  <AutoRefreshInterval>360</AutoRefreshInterval>
</Registrar>
<Map>
  <Number>100</Number>
  <Address><Joe.Smith> sip:joe.smith@company.com</Address>
</Map>
</Device>
</DivaAPIConfiguration>
```

One line device using H.323

The sample shows the configuration for a 120 channel license of the Dialogic® HMP software, which uses all channels for H.323. The local IP address is 192.168.0.10 and the gatekeeper is available at the address 192.168.0.200. A gateway is available at the same address. All calls with a plain phone number are established via the gateway. Only the number "123" is mapped to the endpoint 192.168.0.20.

```
<DivaAPIConfiguration>
  <Device>
    <NetworkInterface>192.168.0.100</NetworkInterface>
    <Channels>120</Channels>
    <SignalingProtocol>H323</SignalingProtocol>
    <SignalingPort />
    <SignalingTransportProtocol>UDP</SignalingTransportProtocol>
    <ProxyIPAddress />
    <ProxyHostname />
    <ProxyPort />
    <MaxRegistrations />
    <GatewayIPAddress>192.168.0.200</GatewayIPAddress>
```

```
<GatewayPort />
<Gatekeeper>
  <GatekeeperAddress>192.168.0.200</GatekeeperAddress>
  <EndpointType>Terminal</EndpointType>
  <Number>500</Number>
  <Name>Test</Name>
  <AutoRefreshInterval>360</AutoRefreshInterval>
</Gatekeeper>
<Map>
  <Number>123</Number>
  <Address>TA:192.168.0.20;TEL:123</Address>
</Map>
</Device>
</DivaAPIConfiguration>
```

Two line devices using SIP and H.323

The sample shows the configuration for a 120 channel license of the Dialogic® HMP software. Two line devices will be created, one for SIP and another for H.323. Each line device uses 60 channels. The capabilities of the single devices match the options in the previous samples.

```
<DivaAPIConfiguration>
  <Device>
    <NetworkInterface>192.168.0.100</NetworkInterface>
    <Channels>60</Channels>
    <SignalingProtocol>SIP</SignalingProtocol>
    <SignalingPort />
    <SignalingTransportProtocol>UDP</SignalingTransportProtocol>
    <ProxyIPAddress />
    <ProxyHostname />
    <ProxyPort />
    <MaxRegistrations>10</MaxRegistrations>
    <GatewayIPAddress />
    <GatewayPort />
    <Registrar>
      <RegistrarAddress>192.168.0.10:5061</RegistrarAddress>
      <Domain>192.168.0.10</Domain>
      <UserID>700</UserID>
      <Password>test</Password>
      <AuthorizationUser />
```

```
<AuthorizationRealm>user</AuthorizationRealm>
<DisplayName>700</DisplayName>
<AutoRefreshInterval>360</AutoRefreshInterval>
</Registrar>
<Registrar>
  <RegistrarAddress>192.168.0.10:5061</RegistrarAddress>
  <Domain>192.168.0.10</Domain>
  <UserID>600</UserID>
  <Password>test</Password>
  <AuthorizationUser />
  <AuthorizationRealm>user</AuthorizationRealm>
  <DisplayName>600</DisplayName>
  <AutoRefreshInterval>360</AutoRefreshInterval>
</Registrar>
<Map>
  <Number>100</Number>
  <Address><Joe.Smith> sip:joe.smith@company.com</Address>
</Map>
</Device>
<Device>
  <NetworkInterface>192.168.0.100</NetworkInterface>
  <Channels>60</Channels>
  <SignalingProtocol>H323</SignalingProtocol>
  <SignalingPort />
  <SignalingTransportProtocol>UDP</SignalingTransportProtocol>
  <ProxyIPAddress />
  <ProxyHostname />
  <ProxyPort />
  <MaxRegistrations />
  <GatewayIPAddress>192.168.0.200</GatewayIPAddress>
  <GatewayPort />
  <Gatekeeper>
    <GatekeeperAddress>192.168.0.200</GatekeeperAddress>
    <EndpointType>Terminal</EndpointType>
    <Number>500</Number>
    <Name>Test</Name>
    <AutoRefreshInterval>360</AutoRefreshInterval>
```

```
</Gatekeeper>  
  <Map>  
    <Number>123</Number>  
    <Address>TA:192.168.0.20;TEL:123</Address>  
  </Map>  
</Device>  
</DivaAPIConfiguration>
```