



# IP Gateway (Global Call) for Host Media Processing

Demo Guide

---

*December 2005*



INFORMATION IN THIS DOCUMENT IS PROVIDED IN CONNECTION WITH INTEL® PRODUCTS. NO LICENSE, EXPRESS OR IMPLIED, BY ESTOPPEL OR OTHERWISE, TO ANY INTELLECTUAL PROPERTY RIGHTS IS GRANTED BY THIS DOCUMENT. EXCEPT AS PROVIDED IN INTEL'S TERMS AND CONDITIONS OF SALE FOR SUCH PRODUCTS, INTEL ASSUMES NO LIABILITY WHATSOEVER, AND INTEL DISCLAIMS ANY EXPRESS OR IMPLIED WARRANTY, RELATING TO SALE AND/OR USE OF INTEL PRODUCTS INCLUDING LIABILITY OR WARRANTIES RELATING TO FITNESS FOR A PARTICULAR PURPOSE, MERCHANTABILITY, OR INFRINGEMENT OF ANY PATENT, COPYRIGHT OR OTHER INTELLECTUAL PROPERTY RIGHT. Intel products are not intended for use in medical, life saving, life sustaining, critical control or safety systems, or nuclear facility applications.

Intel may make changes to specifications and product descriptions at any time, without notice.

This IP Gateway (Global Call) for Host Media Processing Demo Guide as well as the software described in it is furnished under license and may only be used or copied in accordance with the terms of the license. The information in this manual is furnished for informational use only, is subject to change without notice, and should not be construed as a commitment by Intel Corporation. Intel Corporation assumes no responsibility or liability for any errors or inaccuracies that may appear in this document or any software that may be provided in association with this document.

Except as permitted by such license, no part of this document may be reproduced, stored in a retrieval system, or transmitted in any form or by any means without the express written consent of Intel Corporation.

Copyright © 2003-2005, Intel Corporation

Celeron, Dialogic, Intel, Intel Centrino, Intel logo, Intel NetMerge, Intel NetStructure, Intel Xeon, Intel XScale, IPLink, and Pentium are trademarks or registered trademarks of Intel Corporation or its subsidiaries in the United States and other countries.

\* Other names and brands may be claimed as the property of others.

Publication Date: December 2005

Document Number: 05-2490-001

Intel Converged Communications, Inc.  
1515 Route 10  
Parsippany, NJ 07054

For **Technical Support**, visit the Intel Telecom Support Resources website at:  
<http://developer.intel.com/design/telecom/support>

For **Products and Services Information**, visit the Intel Telecom and Compute Products website at:  
<http://www.intel.com/design/network/products/telecom>

For **Sales Offices** and other contact information, visit the Buy Telecom Products page at:  
<http://www.intel.com/buy/networking/telecom.htm>



# Contents

---

	<b>Revision History</b> .....	8
	<b>About This Publication</b> .....	9
	Purpose .....	9
	Intended Audience .....	9
	How to Use This Publication .....	9
	Related Information .....	10
<b>1</b>	<b>Demo Description</b> .....	11
<b>2</b>	<b>System Requirements</b> .....	13
	2.1 Hardware Requirements .....	13
	2.2 Software Requirements .....	13
<b>3</b>	<b>Preparing to Run the Demo</b> .....	15
	3.1 Connecting to External Equipment .....	15
	3.2 Editing Configuration Files .....	15
	3.2.1 File Location .....	16
	3.2.2 Editing the gateway.cfg Configuration File .....	16
	3.3 Compiling and Linking .....	19
	3.4 Configuring the Intel NetStructure® Host Media Processing Software .....	20
	3.4.1 HMP Licenses .....	20
	3.4.2 Country Dependent Parameters .....	20
<b>4</b>	<b>Running the Demo</b> .....	21
	4.1 Starting the Demo .....	21
	4.2 Demo Options .....	21
	4.3 Using the Demo .....	22
	4.4 Stopping the Demo .....	23
<b>5</b>	<b>Demo Details</b> .....	25
	5.1 Files Used by the Demo .....	25
	5.1.1 Demo Source Code Files .....	25
	5.1.2 Utility Files .....	27
	5.1.3 PDL Files .....	27
	5.2 Programming Model Classes .....	27
	5.2.1 Class Diagram .....	28
	5.2.2 Channel Class .....	29
	5.2.3 Configuration Class .....	30
	5.2.4 GCCallControl Class .....	31
	5.2.5 GCDevice Class .....	31
	5.2.6 GWCall Class .....	31
	5.2.7 IPBoard Class .....	32
	5.2.8 IPCallControl Class .....	32
	5.2.9 IPDevice Class .....	33
	5.2.10 PSTNBoard Class .....	33

5.2.11	PSTNCallControl Class	33
5.2.12	PSTNDevice Class	33
5.2.13	ResourceManager Class	34
5.2.14	R4Board Class	35
5.2.15	R4Device Class	35
5.3	Threads	36
5.4	Initialization	36
5.5	Event Handling	38
5.5.1	Event Mechanism	38
5.5.2	Handling Keyboard Input Events	38
5.5.3	Handling SRL Events	38
5.5.4	Handling Application Exit Events	39
<b>6</b>	<b>Demo State Machines</b>	<b>41</b>
6.1	GWCall State Machine - Inbound Call from IP	41
6.1.1	GWCall State Machine Description - Inbound from IP	41
6.1.2	GWCall::callNull State	42
6.1.3	GWCall::callGetIPInfo	43
6.1.4	GWCall::callIPOffered	43
6.1.5	GWCall::callIPAccepting	43
6.1.6	GWCall::callIPSTNConnected	44
6.1.7	GWCall::callConnected	44
6.1.8	GWCall::callDropping	44
6.1.9	GWCall::callReleasing	44
6.2	GWCall State Machine - Inbound Call from PSTN	45
6.2.1	GWCall State Machine Description - Inbound from PSTN	45
6.2.2	GWCall::callNull State	46
6.2.3	GWCall::callIPSTNDetected	47
6.2.4	GWCall::callIPSTNOffered	47
6.2.5	GWCall::callIPSTNAccepting	47
6.2.6	GWCall::callIPConnected	48
6.2.7	GWCall::callConnected	48
6.2.8	GWCall::callDropping	48
6.2.9	GWCall::callReleasing	49
6.3	PSTNCallControl State Machine	49
6.3.1	PSTNCallControl State Machine Description	49
6.3.2	PSTNCallControl::Null State	50
6.3.3	PSTNCallControl::Detected State	51
6.3.4	PSTNCallControl::Offered State	51
6.3.5	PSTNCallControl::Accepting State	52
6.3.6	PSTNCallControl::Answering State	52
6.3.7	PSTNCallControl::makingCall State	52
6.3.8	PSTNCallControl::Connected State	53
6.3.9	PSTNCallControl::Dropping State	53
6.3.10	PSTNCallControl::Releasing State	53
6.4	IPCallControl State Machine	53
6.4.1	IPCallControl State Machine Description	54
6.4.2	IPCallControl::Null State	55
6.4.3	IPCallControl::getCallInfo State	56
6.4.4	IPCallControl::offered State	56

6.4.5	IPCallControl::accepting State . . . . .	57
6.4.6	IPCallControl::answering State . . . . .	57
6.4.7	IPCallControl::makingCall State . . . . .	57
6.4.8	IPCallControl::connected State . . . . .	58
6.4.9	IPCallControl::dropping State . . . . .	58
6.4.10	IPCallControl::dropped State . . . . .	59
6.4.11	IPCallControl::releasing State . . . . .	59
<b>Glossary . . . . .</b>		<b>61</b>
<b>Index . . . . .</b>		<b>65</b>

## Figures

---

1	Connecting to External Equipment . . . . .	15
2	Configuration File Parameters . . . . .	18
3	IP Gateway (Global Call) Class Diagram . . . . .	29
4	IP Gateway (Global Call) Demo Threads . . . . .	36
5	IP Gateway (Global Call) System Initialization . . . . .	37
6	GWCall State Machine - Inbound Call from IP . . . . .	42
7	GWCall State Machine - Inbound Call from PSTN . . . . .	46
8	PSTNCallControl State Machine . . . . .	50
9	IPCallControl State Machine . . . . .	55

## Tables

---

1	Command Line Switches . . . . .	21
2	Runtime Keyboard Commands . . . . .	22
3	Source Files Used by the IP Gateway (Global Call) Demo . . . . .	25
4	Utility Files Used by the IP Gateway (Global Call) Demo . . . . .	27
5	PDL Files Used by the IP Gateway (Global Call) Demo - Windows OS . . . . .	27
6	Channel Class Attributes . . . . .	29
7	Configuration Class Attributes . . . . .	30
8	GCCallControl Class Attributes . . . . .	31
9	GCDevice Class Attributes . . . . .	31
10	GWCall Class Attributes . . . . .	32
11	IPMediaBoard Class Attributes . . . . .	32
12	IPCallControl Class Attributes . . . . .	32
13	IPDevice Class Attributes . . . . .	33
14	PSTNCallControl Class Attributes . . . . .	33
15	PSTNDevice Class Attributes . . . . .	34
16	ResourceManager Class Attributes . . . . .	34
17	R4Board Class Attributes . . . . .	35
18	R4Device Class Attributes . . . . .	36



## ***Revision History***

---

This revision history summarizes the changes made in each published version of this document.

<b>Document No.</b>	<b>Publication Date</b>	<b>Description of Revisions</b>
05-2490-001	December 2005	Initial version of document.





## About This Publication

---

This section describes the purpose of the guide, the intended audience, and references to other documents that may be useful to the user.

- [Purpose](#)
- [Intended Audience](#)
- [How to Use This Publication](#)
- [Related Information](#)

### Purpose

This guide provides information on the IP Gateway (Global Call) demo that is available with your Intel NetStructure® Host Media Processing (HMP) release. This guide describes the demo, its requirements, and details about how it works.

### Intended Audience

This guide is intended for application developers who will be developing a PSTN-IP gateway application using the Global Call API. Developers should be familiar with the C++ programming language and the Windows\* programming environment.

This information is intended for:

- Distributors
- Toolkit Developers
- Independent Software Vendors (ISVs)
- Value Added Resellers (VARs)
- Original Equipment Manufacturers (OEMs)

### How to Use This Publication

Refer to this publication after you have installed the hardware and the HMP system software.

This publication assumes that you are familiar with the Windows operating system and the C++ programming language.

The information in this guide is organized as follows:

- [Chapter 1, “Demo Description”](#) introduces you to the demo and its features

- [Chapter 2, “System Requirements”](#) outlines the hardware and software required to run the demo
- [Chapter 3, “Preparing to Run the Demo”](#) describes the preparations required before running the demo
- [Chapter 4, “Running the Demo”](#) describes how to run the demo
- [Chapter 5, “Demo Details”](#) provides details on how the demo works
- [Chapter 6, “Demo State Machines”](#) provides details on the demo state machines

## Related Information

See the following for more information:

- *HMP Release Guide* - provides information on the HMP software, system requirements, software and hardware features, supported hardware, and release documentation
- *HMP Release Update* (available on the Technical Support web site only) - describes compatibility issues, restrictions and limitations, known problems, and late-breaking updates or corrections to the release documentation
- *Intel NetStructure<sup>®</sup> Digital Network Interface Boards Configuration Guide* - provides configuration information for digital network interface boards.
- *Global Call API Programming Guide* - describes the Global Call software and provides guidelines for building applications that use the Global Call software
- *Global Call API Library Reference* - provides reference information on all Global Call functions and parameters
- *Global Call IP for Host Media Processing Technology Guide* - provides technology-specific information when using the Global Call software with IP interfaces
- <http://developer.intel.com/design/telecom/support/> (for technical support)
- <http://www.intel.com/design/network/products/telecom/index.htm> (for product information)

The IP Gateway (Global Call) demo is a host-based application that demonstrates using the Global Call API to build a PSTN-IP gateway. The demo source code can be used as sample code for those who want to begin developing an application from a working application. The demo is not designed to implement a complete gateway and it lacks features such as least-cost routing, etc.

The IP Gateway (Global Call) demo supports the following features:

- Accepts IP calls
- Places IP calls
- Accepts PSTN calls
- Places PSTN calls
- Configuration file for hardware and parameter settings
- Command line options for running the demo executable file
- Output log files
- Printing and output tracing to the monitor
- QoS (Quality of Service)

The IP Gateway (Global Call) demo runs under the following operating systems:

- Windows\* XP
- Windows 2003 Server



This chapter discusses the system requirements for running the IP Gateway (Global Call) demo. It contains the following topics:

- [Hardware Requirements](#) ..... 13
- [Software Requirements](#) ..... 13

## 2.1 Hardware Requirements

To run the IP Gateway (Global Call) demo, you need:

- Intel NetStructure® Digital Network Interface board
- Network Interface Card (NIC)
- IP network cable

For other hardware requirements, such as memory requirements, see the *Release Guide* for the system release you are using.

### Network Hardware

The following network hardware components were tested for interoperability with the IP Gateway (Global Call) demo:

- Adtran\* TSU 600e multiplexer
- Polycom\* IP Soundpoint\* 300

## 2.2 Software Requirements

To run the IP Gateway (Global Call) demo, you need the Intel NetStructure Host Media Processing (HMP) software and a valid HMP license.

**Note:** A default, one port HMP Validation license is enabled after the HMP software is installed. This default license supports the IP Gateway (Global Call) demo.

For a list of operating system requirements see the *Release Guide* for the system release you are using.

See [Section 3.3, “Compiling and Linking”](#), on page 19 for a list of compilers that may be used with this demo. Using a non-supported compiler may cause unforeseen problems in running the demo.



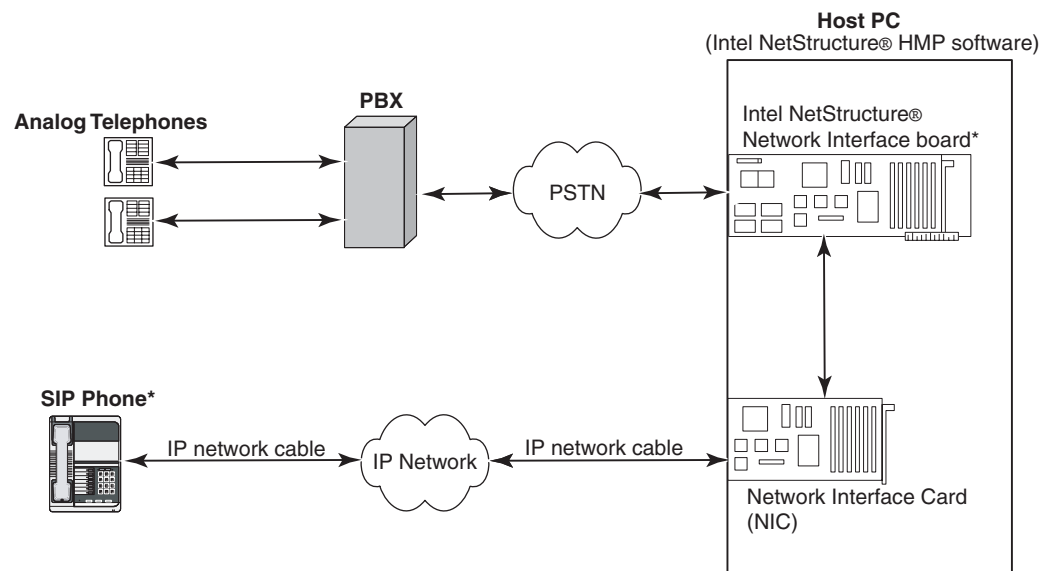
This chapter discusses the preparations necessary to run the IP Gateway (Global Call) demo. It provides information about the following topics:

- Connecting to External Equipment . . . . . 15
- Editing Configuration Files . . . . . 15
- Compiling and Linking . . . . . 19
- Configuring the Intel NetStructure® Host Media Processing Software . . . . . 20

## 3.1 Connecting to External Equipment

The external equipment connections for the IP Gateway (Global Call) demo are presented in Figure 1:

**Figure 1. Connecting to External Equipment**



\* Source IP address for the Intel NetStructure Network Interface board and destination IP address for the SIP Phone are included in the *gateway.cfg* file.

## 3.2 Editing Configuration Files

This section discusses how to configure the demo for your system. It contains the following topics:

- [File Location](#)
- [Editing the gateway.cfg Configuration File](#)

### 3.2.1 File Location

Before running the IP Gateway (Global Call) demo, modify the *gateway.cfg* file to reflect your system environment. Use a text editor and open the file from `$(INTEL_DIALOGIC_DIR)\demos\gateway\release`.

### 3.2.2 Editing the gateway.cfg Configuration File

Below is an example of the *gateway.cfg* file. Update the following information according to your development environment:

Source

Source (originator) address

Destination

IP address of the NIC on the destination Gateway host.

RemotePhoneNumber

Destination phone number to call. It is transferred during call establishment to target gateway.

LocalPhoneNumber

The number used for PSTN calls.

pstnProtocol

The PSTN protocol supported by the gateway. Possible values are: T1, E1, ISDN (including NFAS), CAS.

**Note:** Certain PSTN protocols may require updates to the country dependent parameter (CDP) files included in the Global Call Protocols package. Refer to the *Global Call Country Dependent Parameters (CDP) for PDK Protocols Configuration Guide* for more information.

DTMFmode

Specifies how DTMF tones are transmitted. Possible values are: RTPInBand (usually used with G.711 coders), OutOfBand (usually used with low bandwidth coders, e.g., GSM), RTPRFC2833.

ipProtocol

The IP Protocol used for opening the IP line devices. Values are: H323, SIP, both.

AudioRxCodecs

Describes the receive voice coder. The parameters are as follows:

- **CoderType** – The type of coder. See the *Release Guide* for specific information about coder support in this release.
- **CoderFramesPerPkt** – Specify the number of frames per packet for the selected coder. See the *Release Guide* for specific information about coder support in this release.
- **CoderVAD** – Specify if VAD is active. See the *Release Guide* for specific information about coder support in this release.

AudioTxCodecs

Describes the transmit voice coder. See [AudioRxCodecs](#) for a description of the parameters.



#### Data Codecs

Describes the fax coder parameters. See [AudioRxCodecs](#) for a description of the parameters.

#### Quality of Service

The application can set threshold values to monitor the quality of service during calls. A fault occurs when the result of a measurement of a QoS parameter crossed a predefined threshold. A success occurs when the result of a measurement of a QoS parameter did not cross a predefined threshold. The QoS parameters are measured during time intervals, starting when a call is established. The following parameters are supported:

- **MediaAlarmLostPackets** – indicates that the percentage of packets lost during a call exceeded its threshold value
- **MediaAlarmJitter** – indicates that the jitter (as defined in RFC 1889) exceeded its threshold value

#### QoS Attributes

Each parameter has six attributes:

- **Threshold** – defines when a QoS parameter is in a fault condition. A fault occurs when the result of a measurement of a QoS parameter crossed the Threshold value.
- **DebounceOn** – the time during which faults are measured (in msec., must be multiple of Interval)
- **DebounceOff** – the time during which successes are measured (in msec., must be multiple of Interval)
- **Interval** – the amount of time between two QoS parameter measurements (in multiples of 100 msec)
- **PercentFail** – the threshold of failures during the DebounceOn time (expressed as a percentage of failures)
- **PercentSuccess** – the threshold of successes during the DebounceOn time (expressed as a percentage of successes)

The default values are as follows:

	<b>Threshold</b>	<b>DebounceOn</b>	<b>DebounceOff</b>	<b>Interval</b>	<b>Percent_Fail</b>	<b>Percent_Success</b>
Lost packets	20	10000	10000	1000	60	40
Jitter	60	20000	60000	5000	60	40

#### Display

Display information passed to destination gateway during call establishment

#### IPT\_UUI

User to User Information string. The information is sent before the Connected state.

#### UII

User Input Indication string to send. The maximum string length is 256 characters (MAX\_STRING).

#### NonStdParm

Non-standard parameter data to send

#### NonStdCmd

Non-standard command string to send. The maximum string length is 256 characters (MAX\_STRING).

#### ObjId

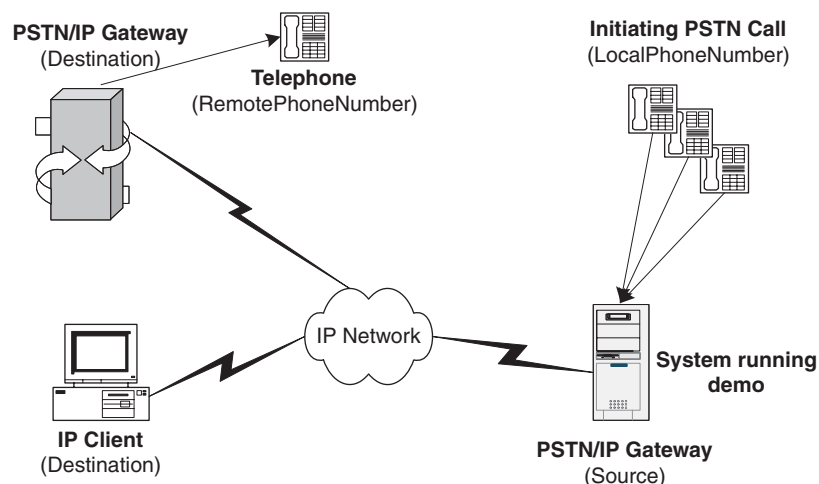
Object ID

### Q931Facility

Facility data to send on the Q.931 channel. The maximum string length is 256 characters (MAX\_STRING).

Figure 2 illustrates how the configuration file parameters relate to the individual network components.

**Figure 2. Configuration File Parameters**



## Sample Configuration File

**Note:** The sample *gateway.cfg* file shown below coincides with the hardware setup shown in [Figure 1, “Connecting to External Equipment”](#), on page 15. The source and destination IP addresses for your development environment will differ from those shown in the example below.

```
#####
# Copyright © 2005, Intel Corporation.
# All rights reserved All names, products, and services mentioned
# herein are the trademarks or registered trademarks of their respective
# organizations and are the sole property of their respective owners
#####

#####
# Source -      IP Address of the HMP System, of the format xxx.xxx.xxx.xx
# Destination - IP Address of the IP Endpoint, of the format xxx.xxx.xxx.xx
# ipProtocol -  Type of Protocol to be used in the call, can be SIP or H323
# DTMFmode -    Type of digit transfer mode, can be inBand, rfc2833, outofband
#####

Channel = 1-120
{
    Source = 196.112.106.139
    Destination = 196.112.107.111
    RemotePhoneNumber = 1
    LocalPhoneNumber = 1
    pstnProtocol = cas
    DTMFmode = inBand
    ipProtocol = SIP
}
```

```

AudioRxCodecs
{
  CoderType = g711mulaw
  CoderFramesPerPkt = 30
  CoderVAD = 0
}

AudioTxCodecs
{
  CoderType = g711mulaw
  CoderFramesPerPkt = 30
  CoderVAD = 0
}

DataCodecs
{
  CoderType = t38
}

MediaAlarmLostPackets
{
  Threshold          = 20      # Threshold value
  DebounceOn         = 10000   # Threshold debounce ON
  DebounceOff        = 10000   # Threshold debounce OFF
  Interval           = 1000    # Threshold Time Interval (ms)
  PercentSuccess      = 60      # Threshold Success Percent
  PercentFail        = 40      # Threshold Fail Percent
}

MediaAlarmJitter
{
  Threshold          = 60      # Threshold value
  DebounceOn         = 20000   # Threshold debounce ON
  DebounceOff        = 60000   # Threshold debounce OFF
  Interval           = 5000    # Threshold Time Interval (ms)
  PercentSuccess      = 60      # Threshold Success Percent
  PercentFail        = 40      # Threshold Fail Percent
}

Display = GATEWAY_Chan1
IPT_UII = User_to_User_1
UII = 12345
NonStdParm = NSP_Chan1
NonStdCmd = NSC_Chan1
ObjId = 2 16 840 1 113741
Q931Facility = facility 01
}

```

## 3.3 Compiling and Linking

Compile the project within the following environments:

- Windows
  - Microsoft® Visual MS C++ environment, version 6

If you have added or changed files, put the files in `$(INTEL_DIALOGIC_DIR)\demos\gateway` to compile the project.

Set `gateway_ood` as the active project and build in debug or release mode.

## 3.4 Configuring the Intel NetStructure® Host Media Processing Software

This section discusses how to configure the Intel NetStructure Host Media Processing (HMP) software. It contains the following topics:

- [HMP Licenses](#)
- [Country Dependent Parameters](#)

### 3.4.1 HMP Licenses

An HMP license is a file containing authorizations for a combination of call control and media processing channels. After you have installed the Intel NetStructure Host Media Processing (HMP) software on the host PC, the Verification license is activated by default. This license is required to run the IP Gateway (Global Call) demo. Refer to the *HMP Installation Guide* and *HMP Administration Guide* for more information about HMP licenses.

### 3.4.2 Country Dependent Parameters

If you are using a PSTN trunk in your development environment that is configured to use Analog, E1 CAS, or T1 robbed bit technologies, you will need to ensure protocol compatibility between the PSTN trunk and the HMP software. Protocol compatibility may require that you create a *pdk.cfg* file and edit the appropriate country dependent parameter (*\*.cdp*) file. Refer to the *Global Call Country Dependent Parameters (CDP) for PDK Protocols Configuration Guide* for more information.

**Note:** *pdk.cfg* and *\*.cdp* files do not apply to systems that use ISDN protocols.

This chapter discusses how to run the IP Gateway (Global Call) demo. It contains the following topics:

- Starting the Demo ..... 21
- Demo Options ..... 21
- Using the Demo ..... 22
- Stopping the Demo ..... 23

## 4.1 Starting the Demo

### Windows

Select Run from the Start Menu. The demo executable file can be found in `$(INTEL_DIALOGIC_DIR)\demos\gateway\release\gateway.exe`. Click OK to run the IP Gateway (Global Call) demo using the default settings.

## 4.2 Demo Options

To specify certain options at run-time, launch the demo from a command line, using any of the switches listed in Table 1.

**Table 1. Command Line Switches**

Switch	Action	Default
-c <filename>	Configuration file name	-c <i>gateway_r4.cfg</i>
-d<n>	Sets Debug Level (0-4): <ul style="list-style-type: none"> <li>• 0-FATAL – used when one or more channels are deadlocked.</li> <li>• 1-ERROR – used when the application receives a failure which doesn't cause the channel to be deadlocked.</li> <li>• 2-WARNING – used when some problem or failure occurred without affecting the channel's usual action.</li> <li>• 3-TRACE – used at the start of the application entrance or the start of any function.</li> <li>• 4-INFO – prints data related to a specific action.</li> </ul> <b>Note:</b> Debug level is inclusive; higher levels include all lower levels	-d0 (Fatal)
-h or ?	Prints the command syntax to the screen	Off

Table 1. Command Line Switches (Continued)

Switch	Action	Default
-l<n,...>	Printouts will be printed into channel log files. If 'all' follows the -l, log files will be created for all available channels. If a list of channels in the following format: C1-C2, C3-C4, C5 follows the -l, log files are created for the channel ranges or specific channels specified in the list. If the "-l" option is not used, prints go to the stdout, for the first 2 channels only (to keep from overloading the CPU, and more convenient for viewing printouts).	Disabled
-m<n,...>	Enables printing channel information to the monitor, in addition to printing to the log file. A maximum of 2 channels may be printed.	Disabled
-n<n>	Sets the number of gateway channels	The lesser of Voice Devices or IP devices
-q	Activates Quality of Service	Disabled

## 4.3 Using the Demo

The demo always waits for input from the keyboard. While the demo is running, you may enter any of the commands listed in Table 2:

Table 2. Runtime Keyboard Commands

Command	Function
c or C	Prints channel statistics to file (statistics.log)
d<n> or D<n>	Change debug level during runtime, where <n> is the debug level
f or F followed by <channel number>	Send Q.931 facility message from the .cfg file
m or M followed by <channel number>	Print log files for up to 2 channels to the screen
n or N followed by <channel number>	Send H.245 non-standard command from the .cfg file
q or Q or Ctrl+c	Terminates the application
u or U followed by <channel number>	Send H.245 User Input Indication message from the .cfg file

## 4.4 Stopping the Demo

The IP Gateway (Global Call) demo runs until it is terminated. Press “q” or “Q” or “Ctrl+c” to terminate the demo application.





This chapter discusses the IP Gateway (Global Call) demo in more detail. It contains the following topics:

- [Files Used by the Demo](#) . . . . . 25
- [Programming Model Classes](#) . . . . . 27
- [Threads](#) . . . . . 36
- [Initialization](#) . . . . . 36
- [Event Handling](#) . . . . . 38

## 5.1 Files Used by the Demo

This section lists the files used by the demo. It contains the following information:

- [Demo Source Code Files](#)
- [Utility Files](#)
- [PDL Files](#)

### 5.1.1 Demo Source Code Files

The source code files listed in Table 3 are located in:  
`$(INTEL_DIALOGIC_DIR)\demos\gateway\release`.

**Table 3. Source Files Used by the IP Gateway (Global Call) Demo**

Directory	File Name	Purpose
gateway_ood	channel.cpp	Implements the operations of the Channel class
gateway_ood	channel.h	Function prototype for channel.cpp
gateway_ood	configuration.cpp	Implements the operations of the Configuration class
gateway_ood	configuration.h	Function prototype for configuration.cpp
gateway_ood	defs.h	Global definitions
gateway_ood	gateway_r4_ood.ver	Demo version information
gateway_ood	gccallcontrol.cpp	Implements the operations of the GCCallControl class
gateway_ood	gccallcontrol.h	Function prototype for gccallcontrol.cpp
gateway_ood	gcdevice.cpp	Implements the operations of the GCDevice class
gateway_ood	gcdevice.h	Function prototype for gcdevice.cpp
gateway_ood	gwcall.cpp	Implements the operations of the GWCall class
gateway_ood	gwcall.h	Function prototype for gwcall.cpp

Table 3. Source Files Used by the IP Gateway (Global Call) Demo (Continued)

Directory	File Name	Purpose
gateway_ood	incfile.h	Function prototype for Global Call and R4 functions
gateway_ood	ipboard.cpp	Implements the operations of the IPBoard class
gateway_ood	ipboard.h	Function prototype for ipboard.cpp
gateway_ood	ipcallcontrol.cpp	Implements the operations of the IPCallControl class
gateway_ood	ipcallcontrol.h	Function prototype for ipcallcontrol.cpp
gateway_ood	ipdevice.cpp	Implements the operations of the IPDevice class
gateway_ood	ipdevice.h	Function prototype for ipdevice.cpp
gateway_ood	main.cpp	Contains the main function and the Wait for Key
gateway_ood	main.h	Function prototype for main.cpp
gateway_ood	pstnboard.cpp	Implements the operations of the DigitalPstnBoard class
gateway_ood	pstnboard.h	Function prototype for digitalpstnboard.cpp
gateway_ood	pstncallcontrol.cpp	Implements the operations of the PstnCallControl class
gateway_ood	pstncallcontrol.h	Function prototype for pstncallcontrol.cpp
gateway_ood	pstndevice.cpp	Implements the operations of the DigitalPstnDevice class
gateway_ood	pstndevice.h	Function prototype for digitalpstndevice.cpp
gateway_ood	r4board.cpp	Implements the operations of the R4Board class
gateway_ood	r4board.h	Function prototype for r4logicalboard.cpp
gateway_ood	r4device.cpp	Implements the operations of the R4Device class
gateway_ood	r4device.h	Function prototype for r4device.cpp
gateway_ood	resourcemanager.cpp	Implements the operations of the ResourceManager class
gateway_ood	resourcemanager.h	Function prototype for resourcemanager.cpp
gateway_ood (Windows only)	gateway_ood.dsp	Visual C++ project file
gateway_ood (Windows only)	gateway_ood.dsw	Visual C++ project workspace
gateway_ood (Windows only)	gateway_ood.rc	Resource file
gateway_ood (Windows only)	resource.h	Microsoft Developer Studio generated include file used by gateway_r4_ood.rc
gateway_ood/release (Windows only)	gateway.cfg	Demo configuration file
gateway_ood/release (Windows only)	gateway_ood.exe	Demo executable

### 5.1.2 Utility Files

In Windows the utility files listed in Table 4 are located in:  
`$(INTEL_DIALOGIC_DIR)\demos\shared\utilcpp.`

**Table 4. Utility Files Used by the IP Gateway (Global Call) Demo**

Directory	File Name	Purpose
utilcpp	utilcpp.ver	Utility library version information
utilcpp	log.cpp	Debugging functions
utilcpp	log.h	Function prototype for libdbg.c
utilcpp (Windows only)	utilcpp.dsw	Utility library Visual C++ workspace
utilcpp (Windows only)	utilcpp.dsp	Utility library Visual C++ project file
utilcpp\release (Windows only)	utilcpp.lib	Compiled Utility library

### 5.1.3 PDL Files

In Windows the PDL files listed in Table 5 are located in:  
`$(INTEL_DIALOGIC_DIR)\demos\shared\pdl_win.`

**Table 5. PDL Files Used by the IP Gateway (Global Call) Demo - Windows OS**

Directory	File Name	Purpose
pdl_win	iptransport.cpp	PDL IP transport functions
pdl_win	iptransport.h	Function prototype for iptransport.cpp
pdl_win	pdl.c	Platform dependency functions
pdl_win	pdl.h	Function prototype for pdl.c
pdl_win	pdl.ver	PDL version information
pdl_win	pdl_win.dsp	PDL Visual C project file
pdl_win	pdl_win.dsw	PDL Visual C workspace
pdl_win\release	pdl_win.lib	Compiled PDL library

## 5.2 Programming Model Classes

This section presents basic information about the IP Gateway (Global Call) demo classes. It contains the following information:

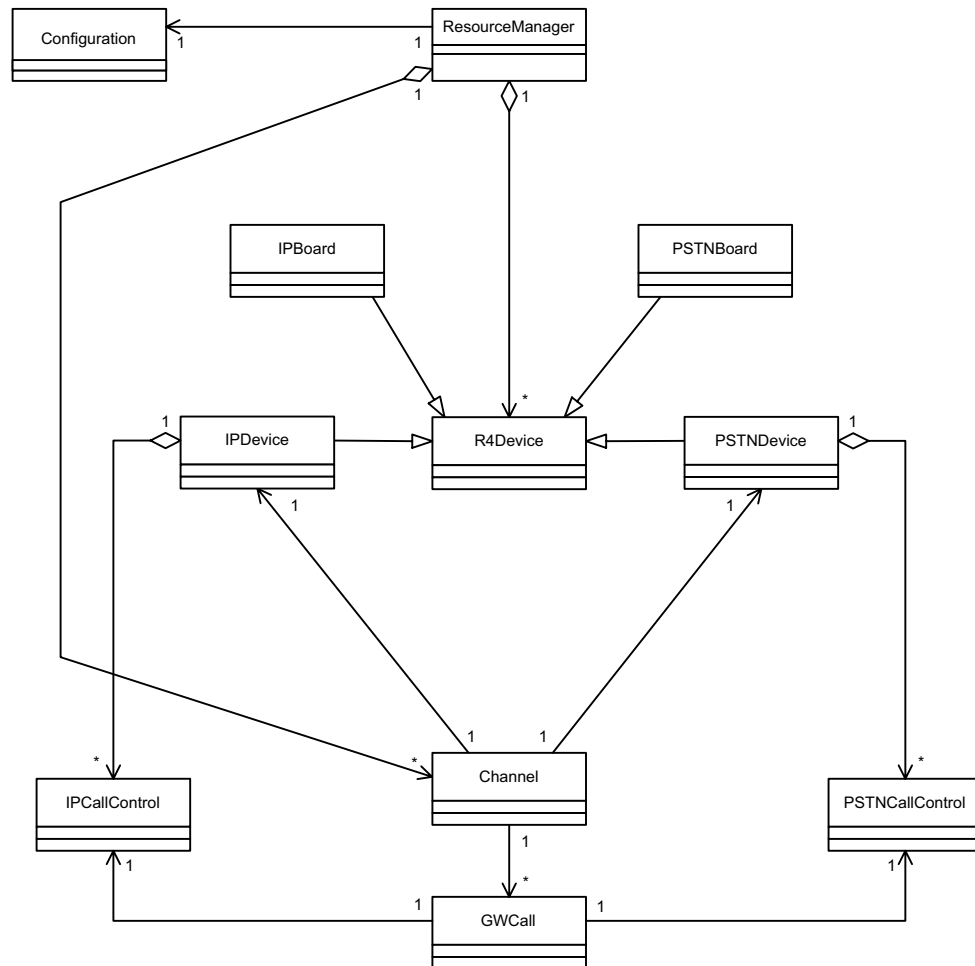
- [Class Diagram](#)
- [Channel Class](#)
- [Configuration Class](#)

- GCCallControl Class
- GCDevice Class
- GWCall Class
- IPBoard Class
- IPCallControl Class
- IPDevice Class
- PSTNBoard Class
- PSTNCallControl Class
- PSTNDevice Class
- ResourceManager Class
- R4Board Class
- R4Device Class

### **5.2.1 Class Diagram**

The following class diagram describes the relationship among the classes.

Figure 3. IP Gateway (Global Call) Class Diagram



## 5.2.2 Channel Class

The Channel class' main role is to control all devices related to a call. It contains one IP device, one PSTN device and all calls related to these devices.

The Channel class attributes are described in Table 6.

Table 6. Channel Class Attributes

Name	Access Privilege	Type	Description
m_pIPMediaDevice	private	IPDevice*	The channel IP device
m_pPSTNDevice	private	IPSTNDevice*	The channel PSTN device

**Table 6. Channel Class Attributes (Continued)**

Name	Access Privilege	Type	Description
m_channelInfo	private	ChannelInfo	Configuration information about the channel
m_pLog	private	Log*	The channel log object
m_staticsInfo	private	ChannelStatistics	Channel statistical information
m_channelId	private	unsigned int	The channel identifier
m_GWCalls	private	GWCALL_LIST	List of the calls initiated on the channel

### 5.2.3 Configuration Class

The Configuration class' main role is to provide an interface to get the needed configuration data. It contains all the needed data structures to parse and save the system configuration (the configuration file and the command line options) and reflects the system configuration to the other classes.

The Configuration class attributes are described in Table 7.

**Table 7. Configuration Class Attributes**

Name	Access Privilege	Type	Description
m_userChannels	private	unsigned int	Indicates the number of channels that the demo will work with.
m_chanInfo	private	ChannelInfoQueue	Queue that contains all the channel information read from the configuration file, such as Tx coder information, the print to log file flag, and the phone number to call.
m_boardInfo	private	BoardInfoQueue	Queue that contains all the board information read from the configuration file.
m_cfgFile	private	char*	The configuration file name
m_alarmQoSFile	private	FILE*	Points to the QoS file
m_QoSFile	private	char*	The name of the QoS log file
m_logLevel	private	E_LogLevel	The log level from the command line
m_stage	private	unsigned char	The stage of parsing the configuration file
m_line	private	int	The line in the configuration file currently being parsed
m_firstSession	private	long	Used to fill the channel information from the configuration file
m_lastSession	private	long	Used to fill the channel information from the configuration file

## 5.2.4 GCCallControl Class

The GCCallControl class' main role is to provide all common functionality of GC call control devices. It is the base class for all GC call control devices and contains the common attributes and operations.

The GCCallControl class attributes are described in Table 8.

**Table 8. GCCallControl Class Attributes**

Name	Access Privilege	Type	Description
m_crn	protected	CRN	The call reference number of the PSTN call control object
m_pLog	protected	Log*	The log object used to control the CC object printouts
m_stateFunctionArray	protected	StateFunction[MAX_STATES]	State machine function array
m_lineDevice	protected	LINEDEV	The line device of the device that the call control belongs to
m_currentState	protected	E_StateMachine	The current state in the state machine
m_dnisEnabled	public	static bool	True if DNIS is used

## 5.2.5 GCDevice Class

The GCDevice class' main role is to provide all common functionality of all R4 signaling devices. It is the base class for R4 signaling devices.

The GCDevice inherits the [R4Device Class](#) attributes. The GCDeviceclass attributes are described in Table 9.

**Table 9. GCDevice Class Attributes**

Name	Access Privilege	Type	Description
m_pChannel	protected	Channel*	Points to the channel containing this device
m_txTimeSlot	protected	unsigned int	The transmit time slot of the device

## 5.2.6 GWCall Class

The GWCall class' main role is to control all resources related to a call. It contains all the resources needed to establish a call. The GWCall class reflects the intersection of call resource status.

The GWCall class attributes are described in Table 10.

Table 10. GWCall Class Attributes

Name	Access Privilege	Type	Description
m_pPSTNCallControl	public	PSTNCallControl	PSTN call control object of the call, handling the PSTN call control
m_pIPCallControl	public	IPCallControl*	IP call control object of the call, handling the IP call control
m_currentState	private	E_StateMachine	Current channel state
m_stateFunctionArray[M AX_STATE]	private	int(stateFunction*)(co nst long eventType, METAEVENT* eventData)	Array of state machine functions
m_pLog	public	Log*	Log object of the call

## 5.2.7 IPBoard Class

The IPBoard class' main role is to manage the IP device database. It contains all the IP devices available in the system and reflects the IP device repository.

The IPBoard inherits the [R4Board Class](#) attributes. The IPBoard class attributes are described in Table 11.

Table 11. IPMediaBoard Class Attributes

Name	Access Privilege	Type	Description
m_rasInfo	private	RASInfo	Includes the information for RAS, read from the configuration file during initialization

## 5.2.8 IPCallControl Class

The IPCallControl class' main role is to provide the IP protocol functionality interface. It controls one IP call and reflects the call status to the other classes.

The IPCallControl class inherits the [GCCallControl Class](#) attributes. The IPCallControl attributes are described in Table 12.

Table 12. IPCallControl Class Attributes

Name	Access Privilege	Type	Description
m_callInfo	private	IPCallInfo	Information connected to the IP call



### 5.2.9 IPDevice Class

The IPDevice class' main role is to provide Global Call functionality for IP devices. It represents the IP devices and reflects the device status and manages all calls related to it.

The IPDevice inherits the GCDevice class attributes. The IPDevice class attributes are described in Table 13.

**Table 13. IPDevice Class Attributes**

Name	Access Privilege	Type	Description
m_callControls	private	IPCallControl{MAX_C ALL_CONTROLS}	Contains the call control objects connected to this device

### 5.2.10 PSTNBoard Class

The PSTNBoard class' main role is to provide all common functionality of all R4 PSTN boards. The PSTNBoard class is the base class for the PSTN boards, containing the common attributes and operations.

The PSTNBoard class inherits all its attributes from the [R4Board Class](#).

### 5.2.11 PSTNCallControl Class

The PSTNCallControl class' main role is to provide a Global Call functionality interface to manage a call. It reflects the PSTN call status to the other classes.

The PSTNCallControl class inherits the [GCCallControl Class](#) attributes. The PSTNCallControl attributes are described in Table 14.

**Table 14. PSTNCallControl Class Attributes**

Name	Access Privilege	Type	Description
m_callInfo	private	PSTNCallInfo	Contains information connected to the PSTN call

### 5.2.12 PSTNDevice Class

The PSTNDevice class' main role is to provide all common functionality of all R4 devices. It is the base class for PSTN R4 devices.

The PSTNDevice inherits the [GCDevice Class](#) attributes. The PSTNDeviceclass attributes are described in Table 15.

Table 15. PSTNDevice Class Attributes

Name	Access Privilege	Type	Description
m_callControls	private	PSTNCallControl[ MAX_CALL_CONTROLS ]	Contains the call control objects connected to this device

### 5.2.13 ResourceManager Class

The ResourceManager class' main role is to initialize the R4 resources. It handles the R4 mechanism and reflects the resource status. It contains the following data:

- all system channels
- configuration object for initialization
- maps R4 device handles to channels
- all detected R4 boards

The ResourceManager class attributes are described in Table 16.

Table 16. ResourceManager Class Attributes

Name	Access Privilege	Type	Description
m_devicesQueue	private	R4DeviceQueue [MAX_DEVICE_TYP E]	Array of device pointer queues. The array index is defined as board type (IP, PSTN). It includes all the devices in the system.
m_channelsQueue	private	ChannelQueue	A queue of all the channels created in the system.
configuration	private	Configuration	An instance of the Configuration class used to determine the configuration of the system during initialization.
m_channelNum	private	int	The number of channels that the demo will work with (this number is the minimum of devices of each type and the user requested -n option).
m_printToMonitor	private	Int[MAX_PRINT_TO_ MONITOR]	The channels that are printing to the monitor
m_numOfPSTNBoards	private	int	The number of PSTN boards detected in the system.

**Table 16. ResourceManager Class Attributes (Continued)**

Name	Access Privilege	Type	Description
m_numOfIPBoards	private	int	The number of IP boards detected in the system.
m_initLog	private	static Log	A log instance used during initialization. All the printouts are sent to the monitor, after which it is destructed. This instance is necessary because during the initialization, there are no channel instances and therefore no log instances. In order to see logs during initialization, the application creates a global log instance for all the devices during initialization and kills it after creating the channel objects and attributing the devices to channels.

## 5.2.14 R4Board Class

The R4Board class' main role is to provide all common functionality for all R4 logical boards. It opens the boards and gets all the information about the devices. The R4BoardClass is the base class for all R4 logical boards containing the common attributes and operations. It represents any R4 logical board.

The R4Board class attributes are described in Table 17.

**Table 17. R4Board Class Attributes**

Name	Access Privilege	Type	Description
m_boardNumber	protected	int	The board number - used in setting the device names found on the board
m_numOfDevices	protected	int	Number of devices available on the board

## 5.2.15 R4Device Class

The R4Device class' main role is to provide all common functionality for all R4 devices. It is the base class for all R4 line devices that can be opened using **gc\_OpenEx( )**. It contains all the common attributes and operations for all R4 devices.

The R4Device class attributes are described in Table 18.

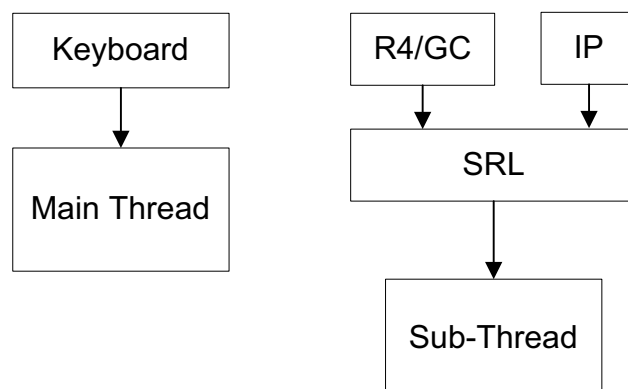
Table 18. R4Device Class Attributes

Name	Access Privilege	Type	Description
m_name	protected	char	The device name, e.g. ipmB1C1
m_inService	protecte	bool	True when the device is available
m_lineDevice	protected	LINEDEV	The device handle (valid after opening)
m_pLog	protected	Log*	The device log instance

## 5.3 Threads

The IP Gateway (Global Call) demo operates with two threads, as shown in Figure 4.

Figure 4. IP Gateway (Global Call) Demo Threads

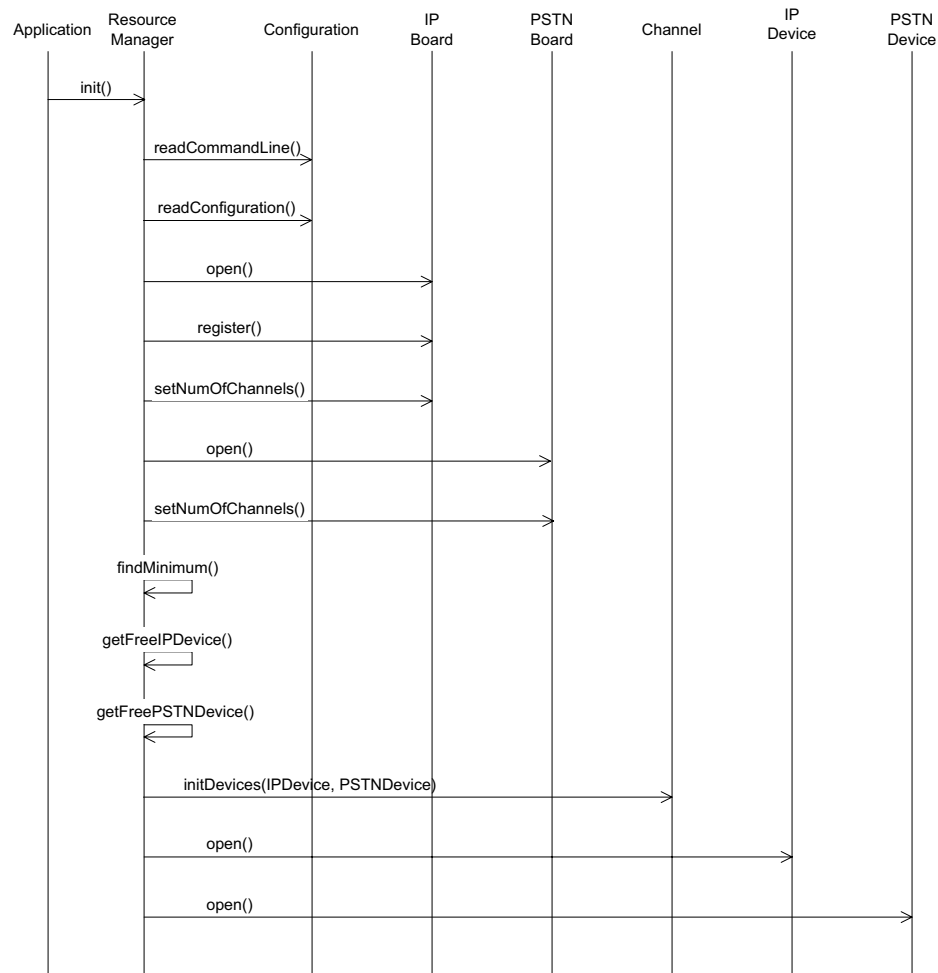


The threads are created as follows:

- The first (main) thread is created by the demo application to get the keyboard input.
- The second thread is an SRL thread, created as a result of the demo application calling **sr\_enblhdlr( )** in Windows. In Linux, the thread must be explicitly created. All Global Call events are received through the SRL.

## 5.4 Initialization

This section describes the demo initialization as shown in Figure 5.

**Figure 5. IP Gateway (Global Call) System Initialization**


The application **main( )** function calls the **init( )** function, which does the following:

1. Calls **resourceManager.configure( )** to read the configuration file and command line options and prints the configuration
2. Calls **resourceManager.getChannelNum( )** to get the number of channels defined by the user in the configuration file or command line -n switch.
3. Calls **gc\_Start( )** to open all configured, call control libraries
4. Calls **printAllLibs( )** to print library status (open or failed).
5. Sets-up the callback handler, **PDLsr\_enbhdr( )**. The callback handler handles events that it receives from the SRL library. For more details see [Section 5.5.3, "Handling SRL Events"](#), on page 38.
6. Calls **resourceManager.init( )** to get the resources available in the system:
  - a. Gets the number of IP channels in the system
  - b. Gets the number of PSTN channels in the system

- c. Finds the minimum between the system channels and the user request
7. Looks for a free IP device and returns a pointer to it
8. Opens the IP device and if the open succeeds returns a pointer to it
9. Looks for a free PSTN device and returns a pointer to it
10. Opens the PSTN device and if the open success returns a pointer to it
11. Initializes the devices on the channel
12. The application **main()** function calls **waitForKey()**, to receive keyboard input.

## 5.5 Event Handling

This section describes how the IP Gateway (Global Call) demo handles events. It contains the following topics:

- [Event Mechanism](#)
- [Handling Keyboard Input Events](#)
- [Handling SRL Events](#)
- [Handling Application Exit Events](#)

### 5.5.1 Event Mechanism

The IP Gateway (Global Call) demo uses the SRL mechanism to retrieve events. When an event occurs, SRL calls event handlers automatically. All events are received by the SRL and then passed to the **callback\_hdlr()** function for handling.

In the initialization phase of the demo the **init()** function sets up the call-back handler, by calling **PDLsr\_enbhdr()**.

Refer to [Chapter 6, “Demo State Machines”](#) for more detailed event handling information.

### 5.5.2 Handling Keyboard Input Events

There is an endless loop **{while(1)}** in the **main()** function in the *Main.cpp* file. In that loop, the application waits forever for a keyboard event by calling the **waitForKey()** function. The event must be handled immediately and event-specific information should be retrieved before the next call to **waitForKey()**.

When the next event occurs or when a time-out is reached, the **waitForKey()** returns and the call-back handler function is called automatically.

### 5.5.3 Handling SRL Events

When the R4/Global Call event is received, the application performs the following:

1. Gets the event device handle, by calling **PDLsr\_getevtdev()**

2. Gets the channel number related to the event, from the global array (`HandleToChannel[ ]`)
3. Updates the `METAEVENT` structure by calling `gc_GetMetaEvent( )`
4. Gets the event type, by calling `PDLsr_getevtttype( )`

#### 5.5.4 Handling Application Exit Events

Normal application exit events don't enter the SRL. The `main( )` function calls `PDLSetApplicationExitPath( )` before initialization. In Linux, this function sets the signals (`SIGINT`, `SIGTERM`, `SIGABRT`) for making the appropriate exit from the application. In Windows, this function enables the detection of `CTRL_CLOSE_EVENT` (closing the window).





This chapter discusses the IP Gateway (Global Call) demo state machines. It contains the following topics:

- [GWCall State Machine - Inbound Call from IP . . . . . 41](#)
- [GWCall State Machine - Inbound Call from PSTN . . . . . 45](#)
- [PSTNCallControl State Machine. . . . . 49](#)
- [IPCallControl State Machine. . . . . 53](#)

## 6.1 GWCall State Machine - Inbound Call from IP

This section describes the state machine for an inbound call from the IP. It contains the following topics:

- [GWCall State Machine Description - Inbound from IP](#)
- [GWCall::callNull State](#)
- [GWCall::callGetIPInfo](#)
- [GWCall::callIPOffered](#)
- [GWCall::callIPAccepting](#)
- [GWCall::callPSTNConnected](#)
- [GWCall::callConnected](#)
- [GWCall::callDropping](#)
- [GWCall::callReleasing](#)

### 6.1.1 GWCall State Machine Description - Inbound from IP

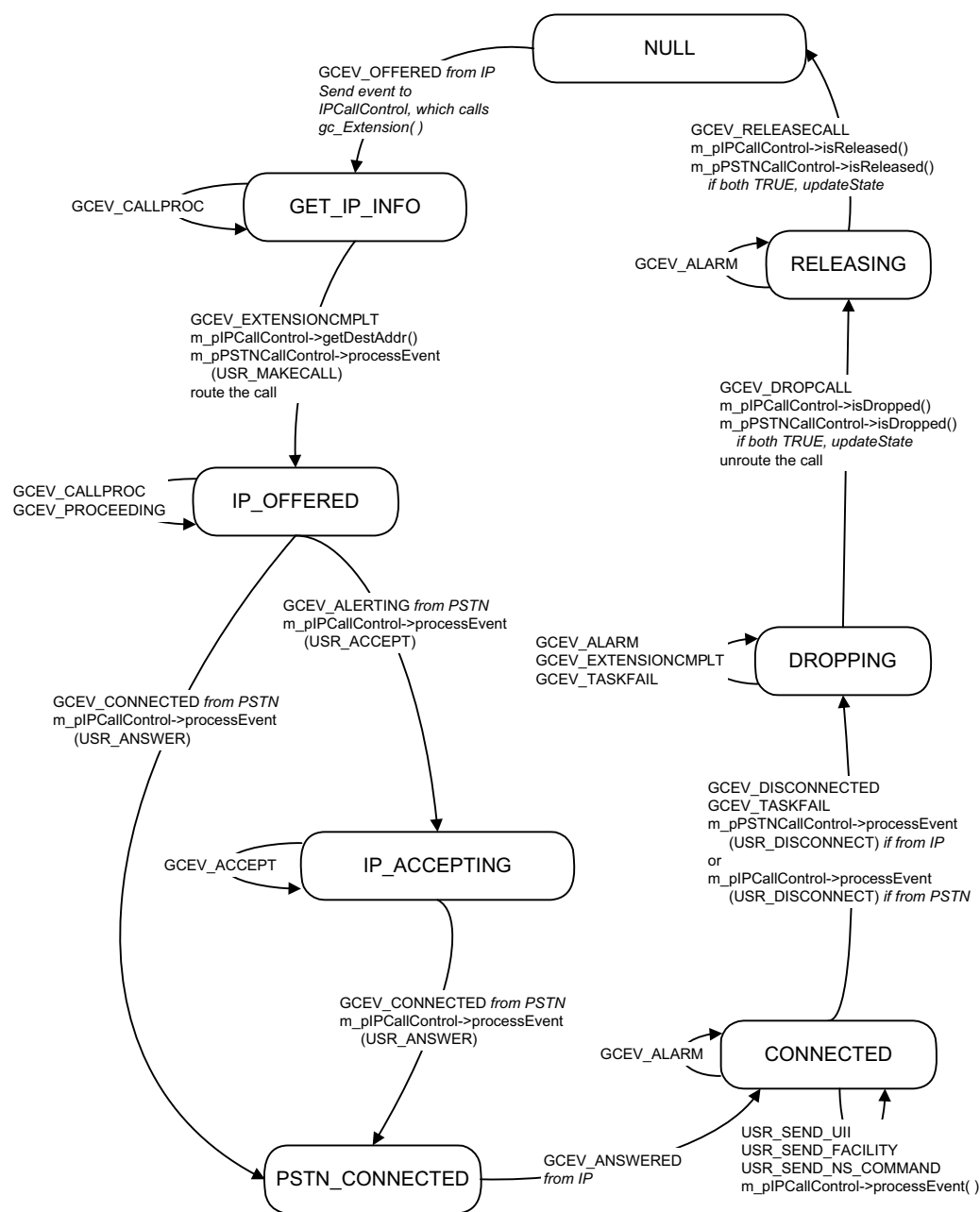
All channels are initialized to the NULL state upon application start.

As soon as an event is received, the event type, the channel number, and the reason for the event (if there is one), are analyzed and the appropriate state machine function is called.

After all the operations are performed within the channel's event state, the state machine function is updated.

The following state diagram describes the call states for the GWCall class for an inbound call from the IP.

Figure 6. GWCall State Machine - Inbound Call from IP



### 6.1.2 GWCall::callNull State

The application waits in the gateNull state for a GCEV\_OFFERED event from the IP. Upon receipt of the event it transfers the event to the IPCallControl module which calls **getIncomingCallInfo()**,

which in turn calls **gc\_Extension()**. See [Section 6.4.2, “IPCallControl::Null State”](#), on page 55 for additional information. The call state transitions to **callGetIPInfo**.

If the application receives a **GCEV\_DISCONNECTED** event, it sets the drop reason by calling **getResultValue()** from the **GCCallControl** module. The application then calls **processEvent(USR\_DISCONNECT)** from the **IPCallControl** module if the PSTN was the event source, or from the **PSTNCallControl** module if the IP was the event source. The call state transitions to **callDropping**.

### 6.1.3 GWCall::callGetIPInfo

The application waits for a **GCEV\_EXTENSIONCMPLT** event. Upon receipt of the event, it calls **getDestAddr()** from the **IPCallControl** module and calls **processEvent(USR\_MAKECALL)** from the **PSTNCallControl** module. See [Section 6.3, “PSTNCallControl State Machine”](#), on page 49 for a description of the **PSTNCallControl** state machine. The application then routes the call. The state transitions to **callIPOffered**.

If the application receives a **GCEV\_CALLPROC** event, it ignores the event and remains in the **callGetIPInfo** state.

### 6.1.4 GWCall::callIPOffered

The application waits for either a **GCEV\_ALERTING** or a **GCEV\_CONNECTED** event from the PSTN.

In the case of **GCEV\_ALERTING**, the application calls **processEvent(USR\_ACCEPT)** from the **IPCallControl** module and the call state transitions to **callIPAccepting**.

In the case of **GCEV\_CONNECTED**, the application calls **processEvent(USR\_ANSWER)** from the **IPCallControl** module and the call state transitions to **callPSTNConnected**.

If the application receives a **GCEV\_CALLPROC** or a **GCEV\_PROCEEDING** event, it ignores the event and remains in the **callGetIPOffered** state.

If the application receives a **GCEV\_DISCONNECTED** or a **GCEV\_TASKFAIL** event, it sets the drop reason by calling **getResultValue()** from the **GCCallControl** module. The application then calls **processEvent(USR\_DISCONNECT)** from the **IPCallControl** module if the PSTN was the event source, or from the **PSTNCallControl** module if the IP was the event source. The call state transitions to **callDropping**.

### 6.1.5 GWCall::callIPAccepting

The application waits for a **GCEV\_CONNECTED** event from the PSTN. Upon receipt of the event it calls **processEvent(USR\_ANSWER)** from the **IPCallControl** module and the call state transitions to **callPSTNConnected**.

If the application receives a **GCEV\_ACCEPT** event, it ignores the event and remains in the **callIPAccepting** state.

If the application receives a GCEV\_DISCONNECTED or a GCEV\_TASKFAIL event, it sets the drop reason by calling **getResultValue()** from the GCCallControl module. The application then calls **processEvent(USR\_DISCONNECT)** from the IPCallControl module if the PSTN was the event source, or from the PSTNCallControl module if the IP was the event source. The call state transitions to callDropping.

### 6.1.6 GWCall::callIPSTNConnected

The application waits for a GCEV\_ANSWERED event from the IP. Upon receipt of the event, the call state transitions to callConnected.

If the application receives a GCEV\_DISCONNECTED or a GCEV\_TASKFAIL event, it sets the drop reason by calling **getResultValue()** from the GCCallControl module. The application then calls **processEvent(USR\_DISCONNECT)** from the IPCallControl module if the PSTN was the event source, or from the PSTNCallControl module if the IP was the event source. The call state transitions to callDropping.

### 6.1.7 GWCall::callConnected

The application waits for a GCEV\_DISCONNECTED or GCEV\_TASKFAIL event. Upon receipt of either event, it sets the drop reason by calling **getResultValue()** from the GCCallControl module. The application then calls **processEvent(USR\_DISCONNECT)** from the IPCallControl module if the PSTN was the event source, or from the PSTNCallControl module if the IP was the event source. The call state transitions to callDropping.

The caller may also use the keyboard to send a User Input Indication, Facility Message, or a Non-standard Command. The application receives the appropriate event (USR\_SEND\_UII, USR\_SEND\_FACILITY, USR\_SEND\_NS\_COMMAND) and calls **processEvent()** from the IPCallControl module. The call state remains in the callConnected state.

### 6.1.8 GWCall::callDropping

The application waits for a GCEV\_DROPCALL event. Upon receipt of the event, it calls **isDropped()** from both the IPCallControl and PSTNCallControl modules. If both sides return TRUE, the call state transitions to callReleasing and the application unrouts the call.

If the application receives a GCEV\_ALARM, GCEV\_EXTENSIONCMPLT, or GCEV\_TASKFAIL event, it ignores the event and remains in the callDropping state.

### 6.1.9 GWCall::callReleasing

The application waits for a GCEV\_RELEASECALL event. Upon receipt of the event, it calls **isReleased()** from both the IPCallControl and PSTNCallControl modules. If both sides return TRUE, the call state transitions to callNull.

If the application receives a GCEV\_ALARM event, it ignores the event and remains in the callReleasing state.

## 6.2 GWCall State Machine - Inbound Call from PSTN

This section describes the state machine for an inbound call from the PSTN. It contains the following topics:

- [GWCall State Machine Description - Inbound from PSTN](#)
- [GWCall::callNull State](#)
- [GWCall::callPSTNDetected](#)
- [GWCall::callPSTNOffered](#)
- [GWCall::callPSTNAccepting](#)
- [GWCall::callIPConnected](#)
- [GWCall::callConnected](#)
- [GWCall::callDropping](#)
- [GWCall::callReleasing](#)

### 6.2.1 GWCall State Machine Description - Inbound from PSTN

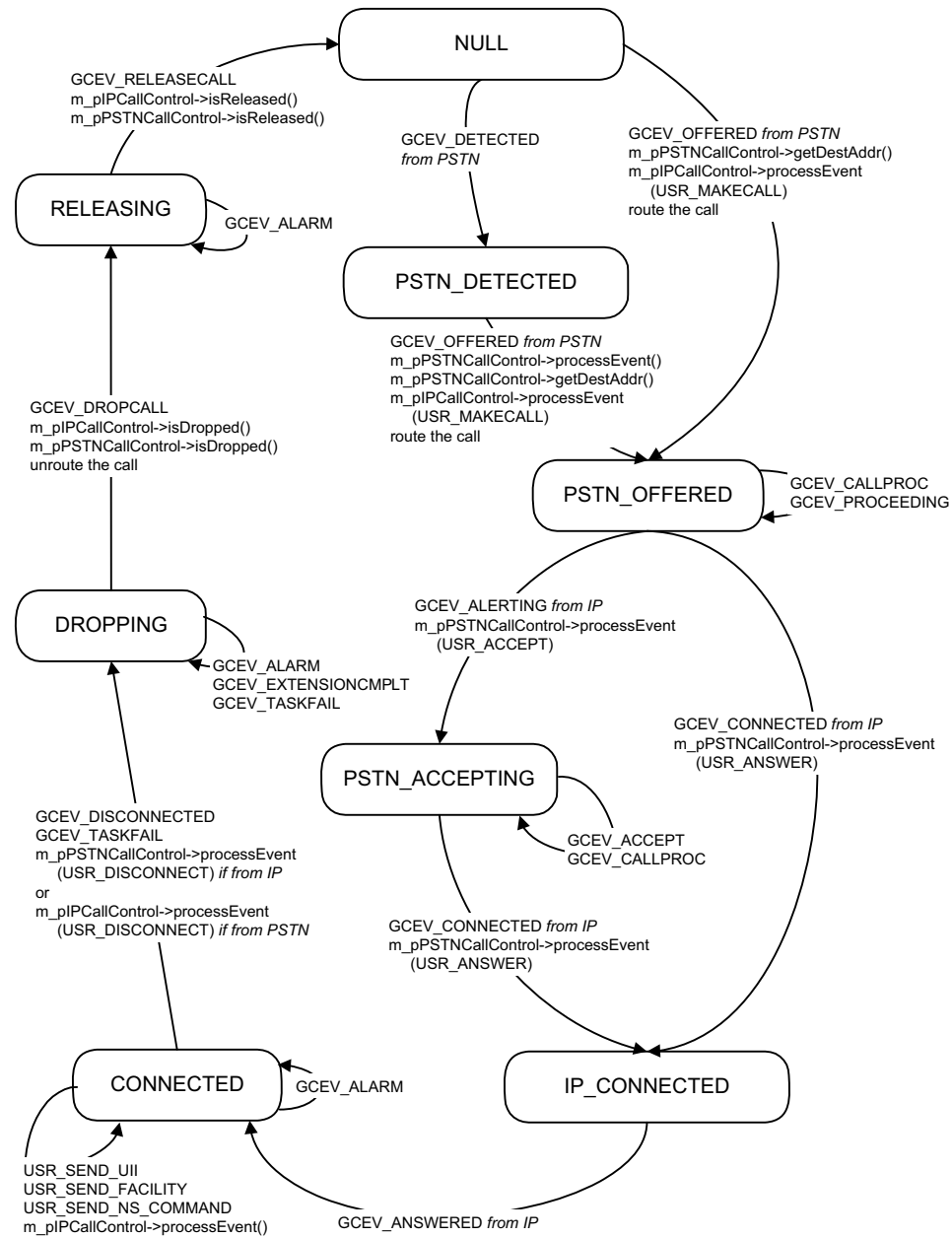
All channels are initialized to the NULL state upon application start.

As soon as an event is received, the event type, the channel number, and the reason for the event (if there is one), are analyzed and the appropriate state machine function is called.

After all the operations are performed within the channel's event state, the state machine function is updated.

The following state diagram describes the call states for the GWCall class for an inbound call from the PSTN.

Figure 7. GWCall State Machine - Inbound Call from PSTN



### 6.2.2 GWCall::callNull State

The application waits in the gateNull state for an `GCEV_OFFERED` event from the PSTN. Upon receipt of the event, the application sets the remote phone number for making the call by calling `getDestAddr()` from the `PSTNCallControl` module. It then calls

**processEvent(USR\_MAKECALL)** from the IPCallCheckControl module. The application routes the call and the call state transitions to callPSTNOffered.

If the application receives a GCEV\_DETECTED event, the call state transitions to callPSTNDetected.

If the application receives a GCEV\_DISCONNECTED event, it sets the drop reason by calling **getResultValue()** from the GCCallControl module. The application then calls **processEvent(USR\_DISCONNECT)** from the IPCallCheckControl module if the PSTN was the event source, or from the PSTNCallCheckControl module if the IP was the event source. The call state transitions to callDropping.

### 6.2.3 GWCall::callPSTNDetected

The application waits for a GCEV\_OFFERED event from the PSTN. Upon receipt of the event, the application calls **processEvent()** from the PSTNCallCheckControl module. The application then sets the remote phone number for making the call by calling **getDestAddr()** from the PSTNCallCheckControl module. It then calls **processEvent(USR\_MAKECALL)** from the IPCallCheckControl module. The application routes the call and the call state transitions to callPSTNOffered.

### 6.2.4 GWCall::callPSTNOffered

The application waits for either a GCEV\_CONNECTED or a GCEV\_ALERTING event from the IP.

In the case of a GCEV\_CONNECTED event, the application calls **processEvent(USR\_ANSWER)** from the PSTNCallCheckControl module and the call state transitions to callIPConnected.

In the case of a GCEV\_ALERTING event, the application calls **processEvent(USR\_ACCEPT)** from the PSTNCallCheckControl module and the call state transitions to callPSTNAccepting.

If the application receives a GCEV\_CALLPROC or a GCEV\_PROCEEDING event, it ignores the event and remains in the callPSTNOffered state.

If the application receives a GCEV\_DISCONNECTED or a GCEV\_TASKFAIL event, it sets the drop reason by calling **getResultValue()** from the GCCallControl module. The application then calls **processEvent(USR\_DISCONNECT)** from the IPCallCheckControl module if the PSTN was the event source, or from the PSTNCallCheckControl module if the IP was the event source. The call state transitions to callDropping.

### 6.2.5 GWCall::callPSTNAccepting

The application waits for a GCEV\_CONNECTED event from the IP. Upon receiving the event it calls **processEvent(USR\_ANSWER)** from the PSTNCallCheckControl module and the call state transitions to callIPConnected.

If the application receives a GCEV\_CALLPROC or a GCEV\_ACCEPT event, it ignores the event and remains in the callPSTNAccepting state.

If the application receives a GCEV\_DISCONNECTED or a GCEV\_TASKFAIL event, it sets the drop reason by calling **getResultValue()** from the GCCallControl module. The application then calls **processEvent(USR\_DISCONNECT)** from the IPCallControl module if the PSTN was the event source, or from the PSTNCallControl module if the IP was the event source. The call state transitions to callDropping.

## 6.2.6 GWCall::callIPConnected

The application waits for a GCEV\_ANSWERED from the PSTN. Upon receipt of the event the call state transitions to callConnected.

If the application receives a GCEV\_EXTENSION event, it ignores the event and remains in the callIPConnected state.

The caller may also use the keyboard to send a User Input Indication, Facility Message, or a Non-standard Command. The application receives the appropriate event (USR\_SEND\_UII, USR\_SEND\_FACILITY, USR\_SEND\_NS\_COMMAND) and calls **processEvent()** from the IPCallControl module. The call state remains in the callIPConnected state.

If the application receives a GCEV\_DISCONNECTED or a GCEV\_TASKFAIL event, it sets the drop reason by calling **getResultValue()** from the GCCallControl module. The application then calls **processEvent(USR\_DISCONNECT)** from the IPCallControl module if the PSTN was the event source, or from the PSTNCallControl module if the IP was the event source. The call state transitions to callDropping.

## 6.2.7 GWCall::callConnected

The application waits for a GCEV\_DISCONNECTED or GCEV\_TASKFAIL event. Upon receipt of either event, it sets the drop reason by calling **getResultValue()** from the GCCallControl module. The application then calls **processEvent(USR\_DISCONNECT)** from the IPCallControl module if the PSTN was the event source, or from the PSTNCallControl module if the IP was the event source. The call state transitions to callDropping.

The caller may also use the keyboard to send a User Input Indication, Facility Message, or a Non-standard Command. The application receives the appropriate event (USR\_SEND\_UII, USR\_SEND\_FACILITY, USR\_SEND\_NS\_COMMAND) and calls **processEvent()** from the IPCallControl module. The call state remains in the callConnected state.

## 6.2.8 GWCall::callDropping

The application waits for a GCEV\_DROPALL event. Upon receipt of the event, it calls **isDropped()** from both the IPCallControl and PSTNCallControl modules. If both sides return TRUE, the call state transitions to callReleasing and the application unroutes the call.



If the application receives a GCEV\_ALARM, GCEV\_EXTENSIONCMPLT, or GCEV\_TASKFAIL event, it ignores the event and remains in the callDropping state.

### 6.2.9 GWCall::callReleasing

The application waits for a GCEV\_RELEASECALL event. Upon receipt of the event, it calls **isReleased()** from both the IPCallControl and PSTNCallControl modules. If both sides return TRUE, the call state transitions to callNull.

If the application receives a GCEV\_ALARM event, it ignores the event and remains in the callReleasing state.

## 6.3 PSTNCallControl State Machine

This section describes the PSTNCallControl state machine. It contains the following topics:

- [PSTNCallControl State Machine Description](#)
- [PSTNCallControl::Null State](#)
- [PSTNCallControl::Detected State](#)
- [PSTNCallControl::Offered State](#)
- [PSTNCallControl::Accepting State](#)
- [PSTNCallControl::Answering State](#)
- [PSTNCallControl::makingCall State](#)
- [PSTNCallControl::Connected State](#)
- [PSTNCallControl::Dropping State](#)
- [PSTNCallControl::Releasing State](#)

### 6.3.1 PSTNCallControl State Machine Description

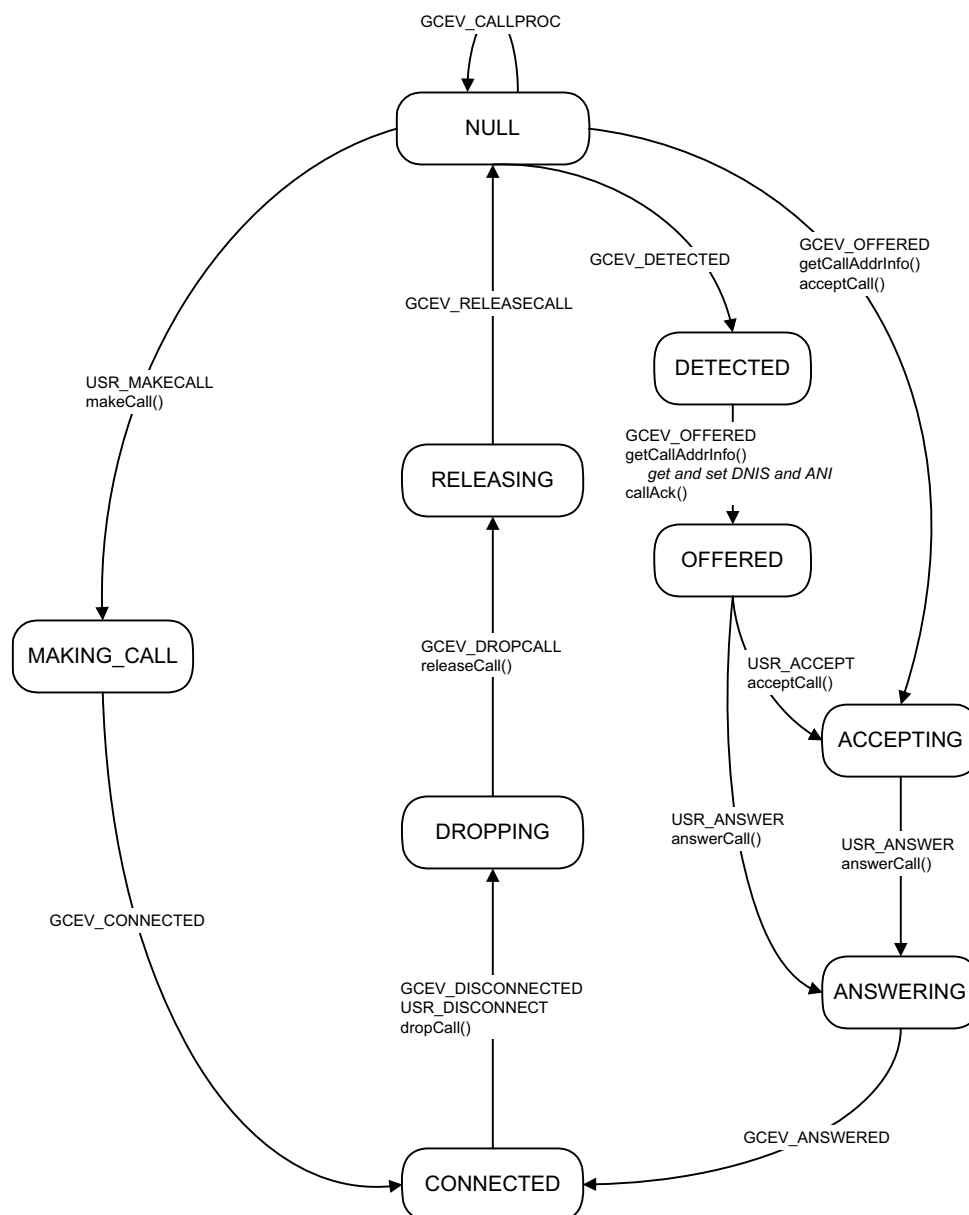
All channels are initialized to the NULL state upon application start.

As soon as an event is received, the event type, the channel number, and the reason for the event (if there is one), are analyzed and the appropriate state machine function is called.

After all the operations are performed within the channel's event state, the state machine function is updated.

The following state diagram describes the call states for the PSTNCallControl class.

Figure 8. PSTNCallControl State Machine



### 6.3.2 PSTNCallControl::Null State

The application waits for a `GCEV_DETECTED`, `GCEV_OFFERED`, or `USR_MAKECALL` event.

In the case of a `GCEV_DETECTED` event, the state transitions to the Detected state.

In the case of a GCEV\_OFFERED event, the application calls **getCallAddrInfo()** to get and set DNIS and ANI and then calls **acceptCall()**. The state transitions to the Accepting state.

In the case of a USR\_MAKECALL event, the application calls **makeCall()** and the state transitions to makingCall.

If the application receives a GCEV\_DISCONNECTED event, it calls **getResultValue()** to get the disconnect reason and then calls **dropCall()**. If the **dropCall()** function fails, the application calls **resetLineDevice()** to reset the line device and the state transitions to Init. Otherwise, the state transitions to Dropping.

If the application receives a USR\_DISCONNECT event it retrieves the DropReason from the EventData and calls **dropCall()**. If the **dropCall()** function fails, the application calls **resetLineDevice()** to reset the line device and the state transitions to Init. Otherwise, the state transitions to Dropping.

### 6.3.3 PSTNCallControl::Detected State

The application waits for a GCEV\_OFFERED event. Upon receipt of the event, it calls **getCallAddrInfo()** to get and set DNIS and ANI and then calls **callAck()**. The state transitions to the Offered state.

If the application receives a GCEV\_DISCONNECTED event, it calls **getResultValue()** to get the disconnect reason and then calls **dropCall()**. If the **dropCall()** function fails, the application calls **resetLineDevice()** to reset the line device and the call state transitions to Init. Otherwise, the state transitions to Dropping.

If the application receives a USR\_DISCONNECT event it retrieves the DropReason from the EventData and calls **dropCall()**. If the **dropCall()** function fails, the application calls **resetLineDevice()** to reset the line device and the state transitions to Init. Otherwise, the state transitions to Dropping.

### 6.3.4 PSTNCallControl::Offered State

The application waits for a USR\_ACCEPT or USR\_ANSWER event.

In the case of USR\_ACCEPT, the application calls **acceptCall()** and the state transitions to Accepting.

In the case of USR\_ANSWER, the application calls **answerCall()** and the state transitions to Answering.

If the application receives a GCEV\_DISCONNECTED event, it calls **getResultValue()** to get the disconnect reason and then calls **dropCall()**. If the **dropCall()** function fails, the application calls **resetLineDevice()** to reset the line device and the state transitions to Init. Otherwise, the state transitions to Dropping.

If the application receives a USR\_DISCONNECT event it retrieves the DropReason from the EventData and calls **dropCall()**. If the **dropCall()** function fails, the application calls

**resetLineDevice()** to reset the line device and the state transitions to Init. Otherwise, the state transitions to Dropping.

### 6.3.5 PSTNCallControl::Accepting State

The application waits for a USR\_ANSWER event. Upon receipt of the event, it calls **answerCall()** and the state transitions to Answering.

If the application receives a GCEV\_ACCEPT event, it ignores the event and remains in the Accepting state.

If the application receives a GCEV\_DISCONNECTED or GCEV\_TASKFAIL event, it calls **getResultValue()** to get the disconnect reason and then calls **dropCall()**. If the **dropCall()** function fails, the application calls **resetLineDevice()** to reset the line device and the state transitions to Init. Otherwise, the state transitions to Dropping.

If the application receives a USR\_DISCONNECT event it retrieves the DropReason from the EventData and calls **dropCall()**. If the **dropCall()** function fails, the application calls **resetLineDevice()** to reset the line device and the state transitions to Init. Otherwise, the state transitions to Dropping.

### 6.3.6 PSTNCallControl::Answering State

The application waits for a GCEV\_ANSWERED event. Upon receipt of the event, the state transitions to Connected.

If the application receives a GCEV\_DISCONNECTED or GCEV\_TASKFAIL event, it calls **getResultValue()** to get the disconnect reason and then calls **dropCall()**. If the **dropCall()** function fails, the application calls **resetLineDevice()** to reset the line device and the state transitions to Init. Otherwise, the state transitions to Dropping.

If the application receives a USR\_DISCONNECT event it retrieves the DropReason from the EventData and calls **dropCall()**. If the **dropCall()** function fails, the application calls **resetLineDevice()** to reset the line device and the state transitions to Init. Otherwise, the state transitions to Dropping.

### 6.3.7 PSTNCallControl::makingCall State

The application waits for a GCEV\_CONNECTED event. Upon receipt of the event, the state transitions to Connected.

If the application receives a GCEV\_ALERTING or GCEV\_PROCEEDING event, it ignores the event and remains in the makingCall state.

If the application receives a GCEV\_DISCONNECTED event, it calls **getResultValue()** to get the disconnect reason and then calls **dropCall()**. If the **dropCall()** function fails, the application calls **resetLineDevice()** to reset the line device and the state transitions to Init. Otherwise, the state transitions to Dropping.

If the application receives a `USR_DISCONNECT` event it retrieves the `DropReason` from the `EventData` and calls `dropCall()`. If the `dropCall()` function fails, the application calls `resetLineDevice()` to reset the line device and the state transitions to `Init`. Otherwise, the state transitions to `Dropping`.

### 6.3.8 PSTNCallControl::Connected State

The application waits for a `GCEV_DISCONNECTED` or `USR_DISCONNECT` event. In the case of `GCEV_DISCONNECTED`, the application calls `getResultValue()` to get the disconnect reason and then calls `dropCall()`. If the `dropCall()` function fails, the application calls `resetLineDevice()` to reset the line device and the state transitions to `Init`. Otherwise, the state transitions to `Dropping`.

In the case of `USR_DISCONNECT`, the application retrieves the `DropReason` from the `EventData` and calls `dropCall()`. If the `dropCall()` function fails, the application calls `resetLineDevice()` to reset the line device and the state transitions to `Init`. Otherwise, the state transitions to `Dropping`.

### 6.3.9 PSTNCallControl::Dropping State

The application waits for a `GCEV_DROPCALL` event. Upon receipt of the event, it calls `releaseCall()` and the state transitions to `Releasing`.

### 6.3.10 PSTNCallControl::Releasing State

The application waits for a `GCEV_RELEASECALL` event. Upon receipt of the event, the state transitions to `Null`.

## 6.4 IPControl State Machine

This section describes the `PSTNCallControl` state machine. It contains the following topics:

- [IPControl State Machine Description](#)
- [IPControl::Null State](#)
- [IPControl::getCallInfo State](#)
- [IPControl::offered State](#)
- [IPControl::accepting State](#)
- [IPControl::answering State](#)
- [IPControl::makingCall State](#)
- [IPControl::connected State](#)
- [IPControl::dropping State](#)
- [IPControl::dropped State](#)
- [IPControl::releasing State](#)

### **6.4.1 IPControl State Machine Description**

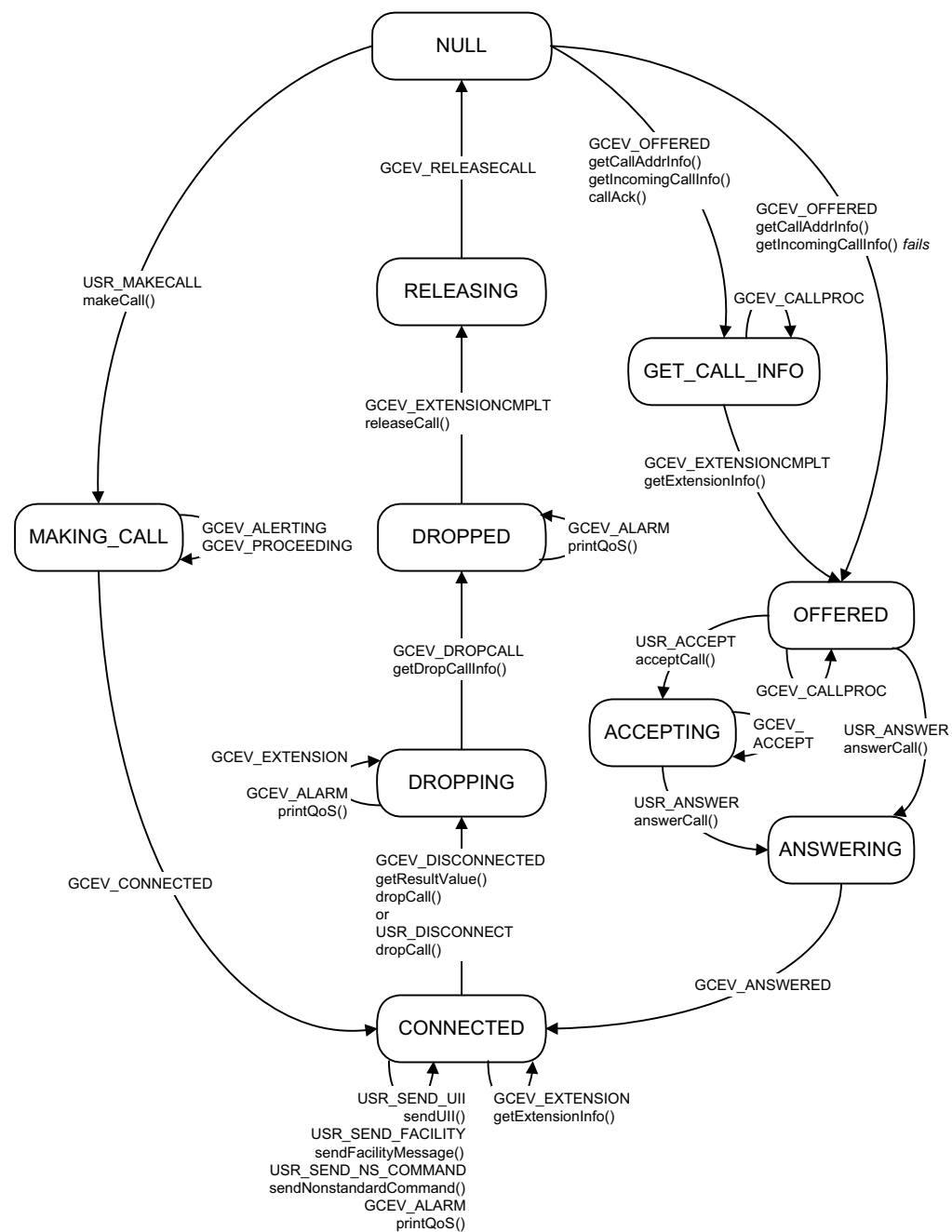
All channels are initialized to the NULL state upon application start.

As soon as an event is received, the event type, the channel number, and the reason for the event (if there is one), are analyzed and the appropriate state machine function is called.

After all the operations are performed within the channel's event state, the state machine function is updated.

The following state diagram describes the call states for the IPControl class.

### Figure 9. IPCallControl State Machine



### 6.4.2 IPCallControl::Null State

The application waits for a GCEV\_OFFERED or USR\_MAKECALL event. In the case of GCEV\_OFFERED, the application calls **getCallAddrInfo()** to get the destination and originator

from the IP message and set the member variables. The application then calls **getIncomingCallInfo()** which calls **gc\_Extension()** to request extension information from the IP. If the function fails, the application does not wait for the complete message and the state transitions to Connected. Otherwise, the application calls **callAck()** and the state transitions to getCallInfo.

In the case of USR\_MAKECALL, the application calls **makeCall()** and the state transitions to makingCall.

If the application receives a GCEV\_DISCONNECTED event, it calls **getResultValue()** to get the disconnect reason and then calls **dropCall()**. If the **dropCall()** function fails, the application calls **resetLineDevice()** to reset the line device and the state transitions to Init. Otherwise, the state transitions to Dropping.

If the application receives a USR\_DISCONNECT event it retrieves the DropReason from the EventData and calls **dropCall()**. If the **dropCall()** function fails, the application calls **resetLineDevice()** to reset the line device and the state transitions to Init. Otherwise, the state transitions to Dropping.

### 6.4.3 IPControl::getCallInfo State

The application waits for a GCEV\_EXTENSIONCMPLT event. The application calls **getExtensionInfo()** and the state transitions to Offered.

If the application receives a GCEV\_CALLPROC event, acknowledging the **callAck()** function, it ignores the event and remains in the getCallInfo state.

If the application receives a GCEV\_DISCONNECTED or GCEV\_TASKFAIL event, it calls **getResultValue()** to get the disconnect reason and then calls **dropCall()**. If the **dropCall()** function fails, the application calls **resetLineDevice()** to reset the line device and the state transitions to Init. Otherwise, the state transitions to Dropping.

If the application receives a USR\_DISCONNECT event it retrieves the DropReason from the EventData and calls **dropCall()**. If the **dropCall()** function fails, the application calls **resetLineDevice()** to reset the line device and the state transitions to Init. Otherwise, the state transitions to Dropping.

### 6.4.4 IPControl::offered State

The application waits for a USR\_ACCEPT or USR\_ANSWER event. In the case of USR\_ACCEPT, the application calls **acceptCall()** and the state transitions to Accepting.

In the case of USR\_ANSWER, the application calls **answerCall()** and the state transitions to Answering.

If the application receives a GCEV\_CALLPROC event, acknowledging the **callAck()** function, it ignores the event and remains in the Offered state.

If the application receives a GCEV\_DISCONNECTED or GCEV\_TASKFAIL event, it calls **getResultValue()** to get the disconnect reason and then calls **dropCall()**. If the **dropCall()**



function fails, the application calls **resetLineDevice()** to reset the line device and the state transitions to Init. Otherwise, the state transitions to Dropping.

If the application receives a **USR\_DISCONNECT** event it retrieves the **DropReason** from the **EventData** and calls **dropCall()**. If the **dropCall()** function fails, the application calls **resetLineDevice()** to reset the line device and the state transitions to Init. Otherwise, the state transitions to Dropping.

#### 6.4.5 IPControl::accepting State

The application waits for a **USR\_ANSWER** event. Upon receipt of the event, it calls **answerCall()** and the state transitions to Answering.

If the application receives a **GCEV\_ACCEPT** event, it ignores the event and remains in the Accepting state.

If the application receives a **GCEV\_DISCONNECTED** or **GCEV\_TASKFAIL** event, it calls **getResultValue()** to get the disconnect reason and then calls **dropCall()**. If the **dropCall()** function fails, the application calls **resetLineDevice()** to reset the line device and the state transitions to Init. Otherwise, the state transitions to Dropping.

If the application receives a **USR\_DISCONNECT** event it retrieves the **DropReason** from the **EventData** and calls **dropCall()**. If the **dropCall()** function fails, the application calls **resetLineDevice()** to reset the line device and the state transitions to Init. Otherwise, the state transitions to Dropping.

#### 6.4.6 IPControl::answering State

The application waits for a **GCEV\_ANSWERED** event. Upon receipt of the event the state transitions to Connected.

If the application receives a **GCEV\_DISCONNECTED** or **GCEV\_TASKFAIL** event, it calls **getResultValue()** to get the disconnect reason and then calls **dropCall()**. If the **dropCall()** function fails, the application calls **resetLineDevice()** to reset the line device and the state transitions to Init. Otherwise, the state transitions to Dropping.

If the application receives a **USR\_DISCONNECT** event it retrieves the **DropReason** from the **EventData** and calls **dropCall()**. If the **dropCall()** function fails, the application calls **resetLineDevice()** to reset the line device and the state transitions to Init. Otherwise, the state transitions to Dropping.

#### 6.4.7 IPControl::makingCall State

The application waits for a **GCEV\_CONNECTED** event. Upon receipt of the event, the state transitions to Connected.

If the application receives a **GCEV\_ALERTING** or **GCEV\_PROCEEDING** event, it ignores the event and remains in the makingCall state.

If the application receives a GCEV\_DISCONNECTED or GCEV\_TASKFAIL event, it calls **getResultValue()** to get the disconnect reason and then calls **dropCall()**. If the **dropCall()** function fails, the application calls **resetLineDevice()** to reset the line device and the state transitions to Init. Otherwise, the state transitions to Dropping.

If the application receives a USR\_DISCONNECT event it retrieves the DropReason from the EventData and calls **dropCall()**. If the **dropCall()** function fails, the application calls **resetLineDevice()** to reset the line device and the state transitions to Init. Otherwise, the state transitions to Dropping.

### 6.4.8 IPControl::connected State

The application waits for a GCEV\_DISCONNECTED or USR\_DISCONNECT event. In the case of GCEV\_DISCONNECTED, the application calls **getResultValue()** to get the disconnect reason and then calls **dropCall()**. If the **dropCall()** function fails, the application calls **resetLineDevice()** to reset the line device and the state transitions to Init. Otherwise, the state transitions to Dropping.

In the case of USR\_DISCONNECT, the application retrieves the DropReason from the EventData and calls **dropCall()**. If the **dropCall()** function fails, the application calls **resetLineDevice()** to reset the line device and the state transitions to Init. Otherwise, the state transitions to Dropping.

If the application receives a GCEV\_EXTENSION event, it calls **getExtensionInfo()** and remains in the Connected state.

If the application receives a USR\_SEND\_UII event, it calls **sendUII()** and remains in the Connected state.

If the application receives a USR\_SEND\_FACILITY event, it calls **sendFacilityMessage()** and remains in the Connected state.

If the application receives a USR\_SEND\_NS\_COMMAND event, it calls **sendNonstandardCommand()** and remains in the Connected state.

If the application receives a GCEV\_ALARM event, it calls **printQoS()** and remains in the Connected state.

### 6.4.9 IPControl::dropping State

The application waits for a GCEV\_DROP\_CALL event. Upon receipt of the event, it calls **getDropCallInfo()**, which calls **gc\_Extension()** and the state transitions to Dropped.

If the application receives a GCEV\_EXTENSION event, it ignores the event and remains in the Dropping state.

If the application receives a GCEV\_ALARM event, it calls **printQoS()** and remains in the Dropping state.

#### 6.4.10 IPControlControl::dropped State

The application waits for a GCEV\_EXTENSIONCMPLT event. Upon receipt of the event it calls **releaseCall()** and the state transitions to Releasing.

If the application receives a GCEV\_ALARM event, it calls **printQoS()** and remains in the Dropped state.

#### 6.4.11 IPControlControl::releasing State

The application waits for a GCEV\_RELEASECALL event. Upon receipt of the event the state transitions to Null.





## Glossary

---

**Codec:** see COder/DECoder

**COder/DECoder:** A circuit used to convert analog voice data to digital and digital voice data to analog audio.

**Computer Telephony (CT):** Adding computer intelligence to the making, receiving, and managing of telephone calls.

**DTMF:** Dual-Tone Multi-Frequency

**Dual-Tone Multi-Frequency:** A way of signaling consisting of a push-button or touch-tone dial that sends out a sound consisting of two discrete tones that are picked up and interpreted by telephone switches (either PBXs or central offices).

**Emitting Gateway:** called by a G3FE. It initiates IFT service for the calling G3FE and connects to a Receiving Gateway.

**E1:** The 2.048 Mbps digital carrier system common in Europe.

**FCD file:** An ASCII file that lists any non-default parameter settings that are necessary to configure a DM3 hardware/firmware product for a particular feature set. The downloader utility reads this file, and for each parameter listed generates and sends the DM3 message necessary to set that parameter value.

**Frame:** A set of SCbus/CT Bus timeslots which are grouped together for synchronization purposes. The period of a frame is fixed (at 125  $\mu$ sec) so that the number of time slots per frame depends on the SCbus/CT Bus data rate.

**G3FE:** Group 3 Fax Equipment. A traditional fax machine with analog PSTN interface.

**Gatekeeper:** An H.323 entity on the Internet that provides address translation and control access to the network for H.323 Terminals and Gateways. The Gatekeeper may also provide other services to the H.323 terminals and Gateways, such as bandwidth management and locating Gateways.

**Gateway:** A device that converts data into the IP protocol. It often refers to a voice-to-IP device that converts an analog voice stream, or a digitized version of the voice, into IP packets.

**H.323:** A set of International Telecommunication Union (ITU) standards that define a framework for the transmission of real-time voice communications through Internet protocol (IP)-based packet-switched networks. The H.323 standards define a gateway and a gatekeeper for customers who need their existing IP networks to support voice communications.

**IAF:** Internet Aware Fax. The combination of a G3FE and a T.38 gateway.

**IFP:** Internet Facsimile Protocol

**IFT:** Internet Facsimile Transfer

**International Telecommunications Union (ITU):** An organization established by the United Nations to set telecommunications standards, allocate frequencies to various uses, and hold trade shows every four years.

**Internet:** An inter-network of networks interconnected by bridges or routers. LANs described in H.323 may be considered part of such inter-networks.

**Internet Protocol (IP):** The network layer protocol of the transmission control protocol/Internet protocol (TCP/IP) suite. Defined in STD 5, Request for Comments (RFC) 791. It is a connectionless, best-effort packet switching protocol.

**Internet Service Provider (ISP):** A vendor who provides direct access to the Internet.

**Internet Telephony:** The transmission of voice over an Internet Protocol (IP) network. Also called Voice over IP (VoIP), IP telephony enables users to make telephone calls over the Internet, intranets, or private Local Area Networks (LANs) and Wide Area Networks (WANs) that use the Transmission Control Protocol/Internet Protocol (TCP/IP).

**ITU:** See International Telecommunications Union.

**Jitter:** The deviation of a transmission signal in time or phase. It can introduce errors and loss of synchronization in high-speed synchronous communications.

**NIC (Network Interface Card):** Adapter card inserted into computer that contains necessary software and electronics to enable a station to communicate over network.

**PCD file:** An ASCII text file that contains product or platform configuration description information that is used by the DM3 downloader utility program. Each of these files identifies the hardware configuration and firmware modules that make up a specific hardware/firmware product. Each type of DM3-based product used in a system requires a product-specific PCD file.

**PSTN:** see Public Switched Telephone Network

**Public Switched Telephone Network:** The telecommunications network commonly accessed by standard telephones, key systems, Private Branch Exchange (PBX) trunks and data equipment.

**Reliable Channel:** A transport connection used for reliable transmission of an information stream from its source to one or more destinations.

**Reliable Transmission:** Transmission of messages from a sender to a receiver using connection-mode data transmission. The transmission service guarantees sequenced, error-free, flow-controlled transmission of messages to the receiver for the duration of the transport connection.

**RTCP:** Real Time Control Protocol

**RTP:** Real Time Protocol

**SIP:** Session Initiation Protocol: an Internet standard specified by the Internet Engineering Task Force (IETF) in RFC 3261. SIP is used to initiate, manage, and terminate interactive sessions between one or more users on the Internet.



**T1:** A digital transmission link with a capacity of 1.544 Mbps used in North America. Typically channeled into 24 digital subscriber level zeros (DS0s), each capable of carrying a single voice conversation or data stream. T1 uses two pairs of twisted pair wires.

**TCP:** see Transmission Control Protocol

**Terminal:** An H.323 Terminal is an endpoint on the local area network which provides for real-time, two-way communications with another H.323 terminal, Gateway, or Multipoint Control Unit. This communication consists of control, indications, audio, moving color video pictures, and/or data between the two terminals. A terminal may provide speech only, speech and data, speech and video, or speech, data, and video.

**Transmission Control Protocol:** The TCP/IP standard transport level protocol that provides the reliable, full duplex, stream service on which many application protocols depend. TCP allows a process on one machine to send a stream of data to a process on another. It is connection-oriented in the sense that before transmitting data, participants must establish a connection.

**UDP:** see User Datagram Protocol

**UDPTL:** Facsimile UDP Transport Layer protocol

**User Datagram Protocol:** The TCP/IP standard protocol that allows an application program on one machine to send a datagram to an application program on another machine. Conceptually, the important difference between UDP datagrams and IP datagrams is that UDP includes a protocol port number, allowing the sender to distinguish among multiple destinations on the remote machine.

**VAD:** Voice Activity Detection





## Symbols

{while(1)} 38

## A

acceptCall() 51, 56

answerCall() 51, 52, 56, 57

## C

callAck() 51, 56

callback\_hdlr() 38

Channel Class 29

Class Diagram 28

Configuration Class 30

## D

Demo Description 11

Demo Details 25

Demo Options 21

Demo Source Code Files 25

Demo State Machines 41

DigitalPSTNBoard Class 33

dropCall() 51, 52, 53, 56, 57, 58

## E

Event Handling 38

Event Mechanism 38

## F

Files Used by the Demo 25

## G

gc\_Extension() 56, 58

gc\_GetMetaEvent() 39

gc\_OpenEx() 35

gc\_Start() 37

getCallAddrInfo() 51, 55

getDestAddr() 43, 46, 47

getDropCallInfo() 58

getExtensionInfo() 56, 58

getIncomingCallInfo() 56

getResultValue() 43, 44, 47, 48, 51, 52, 53, 56, 57, 58

GWCall

gateNull State 42, 46, 50, 51, 52, 53, 55, 56

GWCall Class 31

GWCall State Machine - Inbound Call from IP 41, 45

GWCall State Machine - Inbound Call from PSTN 45

GWCall State Machine Description - Inbound from IP 41, 45

## H

Handling Application Exit Events 39

Handling Keyboard Input Events 38

Handling SRL Events 38

Hardware Requirements 13

## I

init() 37, 38

Initialization 36

IPCallControl Class 32

IPCallControl State Machine 53

IPMediaBoard Class 32

IPMediaDevice Class 33

isDropped() 44, 48

isReleased() 44, 49

## M

main() 37, 38, 39

makeCall() 51, 56

## P

PDL Files 27

PDLSetApplicationExitPath() 39

PDLsr\_enbhdr() 37, 38

PDLsr\_getevtdev() 38

PDLsr\_getevttype() 39

printAllLibs() 37

printQoS( ) 58, 59  
 processEvent( ) 44, 47, 48  
 processEvent(CCEV\_OFFERED) 43  
 processEvent(USR\_ACCEPT) 43, 47  
 processEvent(USR\_ANSWER) 43, 47  
 processEvent(USR\_DISCONNECT) 43, 44, 47, 48  
 processEvent(USR\_MAKECALL) 43, 47  
 Programming Model Classes 27  
 PSTNCallControl Class 33  
 PSTNCallControl State Machine 49

## R

R4Device Class 35  
 R4LogicalBoard Class 35  
 releaseCall( ) 53, 59  
 resetLineDevice( ) 51, 52, 53, 56, 57, 58  
 ResourceManager Class 33  
 resourceManager.configure( ) 37  
 resourceManager.getChannelsNum( ) 37  
 resourceManager.init( ) 37  
 Running the Demo 21

## S

sendFacilityMessage( ) 58  
 sendNonstandardCommand( ) 58  
 sendUII( ) 58  
 Software Requirements 13  
 sr\_enblhdlr( ) 36  
 Starting the Demo 21  
 Stopping the Demo 23  
 System Requirements 13

## T

Threads 36

## U

Using the Demo 22  
 Utility Files 27

## W

waitForKey( ) 38