

# Dialogic® DM/V2400A-cPCI Media Board

## Quick Install Card for cPCI

**Dialogic®**  
Part Number 64-0032-02  
Copyright © 2001-2007  
Dialogic Corporation.  
All Rights Reserved.

## Before You Begin

### Protecting the Board from Damage

**Caution!** All computer boards are sensitive to electrostatic discharge (“ESD”). Handle all static-sensitive boards and components at a static-safe work area, and observe anti-static precautions at all times.

If you are not familiar with ESD safety precautions, visit <http://www.dialogic.com/support/hwinstall> to learn more.

### Unpacking the Board

Unpack the Dialogic® DM/V2400A-cPCI Media Board (“board”) according to the following steps:

1. Prepare a static-safeguarded work area.
2. Carefully remove the board from the shipping carton and anti-static packaging. Handle the board by the edges and avoid touching the board’s components.
3. Lay the board on the static-dissipative work surface.

**Note:** Place boards in static-shielding bags when carrying boards from station to station.

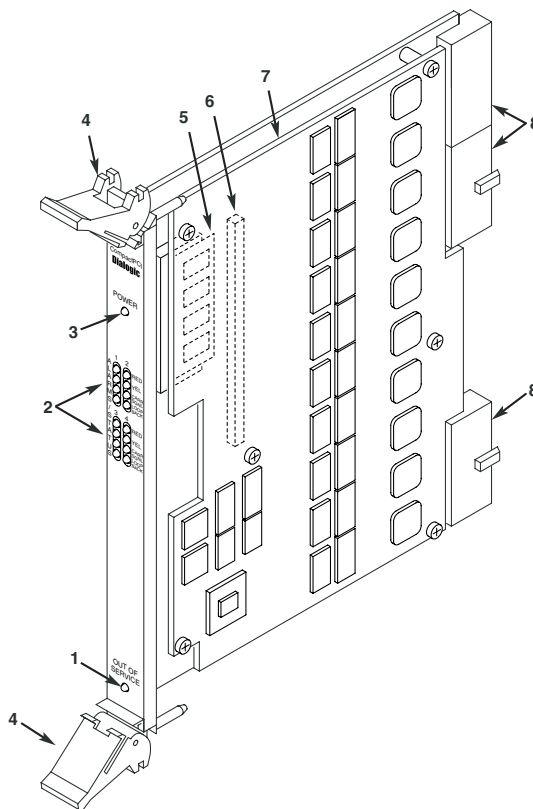
**CAUTION:** Do not remove the board from the anti-static packaging until you are ready to install it. Observe proper anti-static precautions at all times.

## Installing the Hardware

**NOTE:** Dialogic recommends that you install Dialogic® hardware before Dialogic® software. However, if you are adding DM3 hardware to an existing DM3 system, you do not need to uninstall existing DM3 software.

1. Turn the power to the chassis **OFF** if you do not have a live insertion system. If you do have live insertion capability, the power to the chassis can remain **ON**.
2. Remove the chassis cover plate or open the front chassis door.

### Physical Description



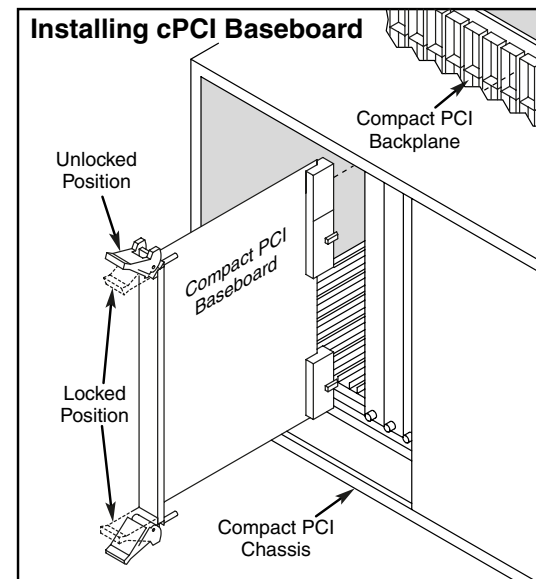
### Compact PCI Baseboard

1. **Out of Service LED:** Indicates board is out of service or in reset from host.
2. **POST LEDs:** Indicate Power On Self Test (POST) status during power up.  
**Alarm Status LEDs:**
  - Red-**Not functional in this assembly.
  - Yellow-** Not functional in this assembly.
  - Carrier Signal-** Not functional in this assembly.
  - Loopback-** Not functional in this assembly.
3. **Power LED**
4. **Board Extractor**
5. **Global Memory Module**
6. **J5:** Signal Processor Daughterboard connector.
7. **Signal Processor Daughterboard**
8. **P1, P4, P5:** Compact PCI board connector to backplane. P1 key conforms to PICMG keying of cPCI boards and is keyed for a 5V signaling environment.

**NOTE:** A Rear I/O module is not used with this resource board.

3. Select an empty expansion bus slot and remove the slot’s retaining screws and access cover plate (if applicable).
4. Using the slot’s board guides, insert the board into the chassis slot. Make sure that the tabs on the board extractors engage the guide holes in the chassis card cage, then lock down the board extractors to fully seat the board.

### Installing cPCI Baseboard



**NOTE:** If the power to the chassis is on, power is automatically applied to the board, the Out of Service LED lights briefly and then goes out, and the Power LED goes on.

5. Replace and tighten the slot’s retaining screws to secure the board firmly in the chassis (if applicable).
6. Select a new slot and repeat steps 3-5 for each board you are installing.
7. If the power to the chassis was turned **OFF** in step 1, turn the power to the chassis **ON**.

---

## After Installing the Hardware

After installing the Dialogic® hardware, proceed with the software installation as described in the Dialogic® System Software documentation (if applicable).

For technical specifications and product information, see the Dialogic website, <http://www.dialogic.com/products.htm>.

---

## Warranty and Return Information

### Warranty Period

For specific warranty information for this board, refer to the Warranty section of the Products page, located at this URL: <http://www.dialogic.com/warranties/>.

### Contacting Technical Support

Dialogic provides technical support for its products through a network of value added distributors who are trained to answer technical questions on installing and configuring Dialogic® products. If you are unsure how to contact your support channel, please call Dialogic in the United States at 973-967-6600 (9am-5pm EST) and we will assist in obtaining the appropriate support channel. Outside the United States please refer to <http://www.dialogic.com/support/contact> to obtain local contact information.

Dialogic also provides direct support via Dialogic® Pro™ Services agreements. For more details of direct support from Dialogic please refer to: <http://www.dialogic.com/support/DialogicPro>.

### Returning a Product

To return a board for warranty repair or any other returns, please refer to the following: <http://www.dialogic.com/support/hwfaults>. To return a board for warranty repair, please refer to the following: <http://www.dialogic.com/support/hwfaults>. For all other returns, contact your vendor or Dialogic Customer Support (for more information, see <http://www.dialogic.com/support/contact/> ).

---

## Sales Assistance

If you have a sales question, please contact your local Sales Representative or the Regional Sales Office for your area. Address, telephone and fax numbers, are available at the Dialogic website located at:

<http://www.dialogic.com/contact.htm>.

To purchase Dialogic® products, please refer to the following website to locate the appropriate supplier.

<http://www.dialogic.com/purchase.htm>.

All contents of this document are furnished for informational use only and are subject to change without notice and do not represent a commitment on the part of Dialogic Corporation or its subsidiaries ("Dialogic"). Reasonable effort is made to ensure the accuracy of the information contained in the document. However, Dialogic does not warrant the accuracy of this information and cannot accept responsibility for errors, inaccuracies or omissions that may be contained in this document.

INFORMATION IN THIS DOCUMENT IS PROVIDED IN CONNECTION WITH DIALOGIC® PRODUCTS. NO LICENSE, EXPRESS OR IMPLIED, BY ESTOPPEL OR OTHERWISE, TO ANY INTELLECTUAL PROPERTY RIGHTS IS GRANTED BY THIS DOCUMENT. EXCEPT AS PROVIDED IN A SIGNED AGREEMENT BETWEEN YOU AND DIALOGIC, DIALOGIC ASSUMES NO LIABILITY WHATSOEVER, AND DIALOGIC DISCLAIMS ANY EXPRESS OR IMPLIED WARRANTY, RELATING TO SALE AND/OR USE OF DIALOGIC PRODUCTS INCLUDING LIABILITY OR WARRANTIES RELATING TO FITNESS FOR A PARTICULAR PURPOSE, MERCHANTABILITY, OR INFRINGEMENT OF ANY INTELLECTUAL PROPERTY RIGHT OF A THIRD PARTY.

Dialogic products are not intended for use in medical, life saving, life sustaining, critical control or safety systems, or in nuclear facility applications.

It is possible that the use or implementation of any one of the concepts, applications, or ideas described in this document, in marketing collateral produced by or on web pages maintained by Dialogic may infringe one or more patents or other intellectual property rights owned by third parties. Dialogic does not provide any intellectual property licenses with the sale of Dialogic products other than a license to use such product in accordance with intellectual property owned or validly licensed by Dialogic and no such licenses are provided except pursuant to a signed agreement with Dialogic. More detailed information about such intellectual property is available from Dialogic's legal department at 9800 Cavendish Blvd., 5<sup>th</sup> Floor, Montreal, Quebec, Canada H4M 2V9.

**Dialogic encourages all users of its products to procure all necessary intellectual property licenses required to implement any concepts or applications and does not condone or encourage any intellectual property infringement and disclaims any responsibility related thereto. These intellectual property licenses may differ from country to country and it is the responsibility of those who develop the concepts or applications to be aware of and comply with different national license requirements.**

Dialogic, Diva, Eicon, Eicon Networks, Eiconcard and SIPcontrol, among others, are either registered trademarks or trademarks of Dialogic. Dialogic's trademarks may be used publicly only with permission from Dialogic. Such permission may only be granted by Dialogic's legal department at 9800 Cavendish Blvd., 5<sup>th</sup> Floor, Montreal, Quebec, Canada H4M 2V9. Any authorized use of Dialogic's trademarks will be subject to full respect of the trademark guidelines published by Dialogic from time to time and any use of Dialogic's trademarks requires proper acknowledgement. The names of actual companies and products mentioned herein are the trademarks of their respective owners.